

**GUNNISON VALLEY TPR
MEETING AGENDA
Hybrid Meeting
August 29, 2024
1:30 p.m. to 3:30pm**

- 1. Introductions**
- 2. Approval of the minutes of the last meeting**
- 3. Update HB 23-1101**
 - STAC BYLAW Changes**
- 4. Planning Meeting #1**
 - a. DTD Presentation
Long Range 2050 Plan
10 Year Plan**
- 5. Presentation MMOF**
 - a. Call for Projects**
- 6. Construction updates**
 - a. Region 3
Blue Mesa Bridge**
 - b. Region 5**
- 7. Update on Grants Available or coming**



Gunnison Valley Transportation Planning Region Meeting
May 9, 2024
Via Zoom Video Conference

1. **CALL TO ORDER and INTRODUCTIONS** – Meeting was called to order at: 1:36pm
 - a. Vince Rogalski (Chair, GVTPR & Statewide Transportation Advisory Committee), Courtney Tribble (Region 10), Michelle Haynes (Region 10),
 - b. CDOT Region 3: Jason Smith Transportation Director, Jason Huddle Local Agency Program, Dave Cesark (Planning and Environmental Manager), Jessi Spencer (Planning Support), Angie Hanier
 - c. CDOT Region 5: Julie Constan (transportation Director, Tim Funk (Planner), Kevin Curry (Program Engineer)
 - d. CDOT: Phil von Hake, Tess Richey
 - e. Scott Murphy (City of Montrose), Martin Schmidt (Gunnison County), Robert Hurd (Hinsdale County Commissioner), Kris Holstrom (San Miguel County), Karla Distel, Joe Dillsworth (Town of Telluride Transit Manager), Josh Smith (City of Ouray), Connie Hunt (Ouray County Manager), Alyssa Lewin (All Points), Anton Sinkewich (City of Gunnison Community Development Director), Laura Pucket Daniels, Troy Russ (Crested Butte Community Development, David Averill (SMART), Scott Truex (Gunnison RTA), Jim Lobe (Town of Mtn Village), Preston Niell (Town of Ridgway), JoAnne Fagan (), Mike McVaugh, Dave (City of Delta), Cody Tusing, Jim Atkinson (Town of Cedaredge), Greg Levine (Hinsdale County), Darin Graber (Town of Telluride), Colleen Hannon (Gunnison)

2. **APPROVAL OF MINUTES for February 2024, Gunnison Valley Transportation Planning Region (GVTPR) Meeting**
Motion to approve minutes: M/S: Kris Holstrom/Robert Hurd. None opposed.

3. **Update of HB 23-1101 (Mark Garcia)**
 - a. The Transportation Commission (TC) will hear the report from the study committee next week, and decisions will be made from the recommendations.
 - i. Split the Inter Mountain and combine the South Central and Southwest.
 - b. Bylaws: updates, Michelle did a brief review of our GVTPR Bylaws that are imbedded in the Region 10 bylaws and everything that CDOT recommends to have in them is covered in the current version.
 - i. CDOT is requiring that each TPR has a transit representative on the board.
 - ii. We have 3 Transit providers in the Region, SMART, All Points and Gunnison Valley RTA. We could consider if the counties want to appoint them to the TPR as voting members.
 - c. Optional have a Regional Transportation Director to be attending the meetings to provide advice, which they are already doing. But would they be allowed as a voting member?

4. **County Meetings**
 - a. CDOT teams are scheduling annual county meetings; Delta, Hinsdale and Montrose, have already happened.
 - b. Gunnison is scheduled for 10:15 on June 11, Ouray is confirmed In Person on June 5
 - i. These are in conjunction with the County Commissioner Meetings
 - ii. For in-person the counties have requested 2-hour work sessions.

5. **DTR | TJ Burr for Region 3 (Transit Liaison with Transit & Rail) Angie for Region 5**
 - a. NTD (National Transit Database) – aggregating statistics show what is happening with transit with Data
 - b. Capital NOFO (Funding Opportunity) was recently closed. Will have operating funding opportunity in the fall.
 - c. TJ reviewed current facilities under construction. All Points Transit has a new facility in process for their offices, staff and buses. SMART also has facilities in process.
 - d. State is reviewing Bustang stops and improvements.
 - e. Have a monthly Transit Meeting, first Thursday of the month, does currently interfere with STAC.

6. Regional Construction Updates

a. Region 3 Construction Updates | Jason Smith

i. Construction

1. Little Blue starts next week, and the remaining portion is the worst curve. We are encouraging them to finish as quickly as possible
2. CC Enterprises is doing traffic control for Little Blue and the Bridge and they will work as best as possible to coordinate those openings.
3. Olathe North Resurfacing has begun.
4. Slope Stability: opened bids this morning and we will be working on the contract to begin in June.

ii. Us 50 Blue Mesa Reservoir – T1 Steel Bridges

1. FHWA contacted CDOT to do some inspections on this type of Bridge throughout the State.
 - a. Normally CDOT does visual inspections on all bridges every 2 years.
 - b. A special inspection, due to the construction and materials of the bridge, was requested. A crack was found and started looking at what quick solutions would be, but after finding subsequent cracks pulled traffic off the bridge. Crews are doing paint removal; have done 80 spots and of those spots we have tested 40 of them and out of those there are 25 spots that have abnormalities. Abnormalities are not necessarily cracks but could be bad welds.
 - c. Started working with Gunnison County immediately upon closing the Bridge and then worked with them to open CR 26 as an alternate travel route. There are 4 openings for traffic to get through on CR 26
 - d. Working on Kebler Pass, with snow removal. We are facing some weather challenges, wind, and more late spring snow.
 - e. Concrete Piers that hold up the Girders look sound upon inspection. As we look at different solutions, we are analyzing what the limitations of the Piers may be with each option.
 - f. Overall goal is safety, in the short term we will facilitate emergency vehicles, mid goal is to facilitate local traffic. Options are:
 1. Local Plating,
 2. Bottom Flange Only, plate the bottom flange with a large piece of steel.
 3. Global Plating: Underneath each span there will be reinforcement, as well as reinforcement on the top. Part of the Deck will need to be removed to make the repairs.
 4. Superstructure Replacement: Replacement of Spans 5-7, replacement of girders and the deck.
 5. Kiewit and Michael Baker are the firms working together on this.
 - g. We are working on procuring steel, it is fracture critical steel, and it ranges from 1.5" – 3" thick. 88 tons if adding plating to the bottom only and 325 tons of steel if all the plating options are included.
 - h. Question: What are your thoughts on the other bridge? Visual inspection has been done and nothing found, once the team is finished inspecting Bridge B, they will begin removing paint and going through the same process on Bridge A.
 - i. The Transportation Commission has allocated \$20 million so far and will allocate more as needed.
 1. The FHWA does not see this as a catastrophic event because the bridge did not fail and therefore funding is not qualified.
 2. CDOT can apply for grants, one is coming up in August that we will be applying for.
 3. On the state level, the Governor did declare an emergency.

b. Region 5 Construction Updates | Kevin Curry

i. Construction

1. Work on 550 at Pa-co-chu-puk has started, including fencing, plan to be done by November
2. Chain Stations: started on 145 locations to be completed fall of 2024
3. 145 Wall Replacement in Ophir, it has been awarded and they have started pre- construction.

ii. Maintenance

1. SH 90 towards Bedrock repaving was completed by CDOT crews.

7. Grant Funding Opportunities

- a. Revitalizing Mainstreet – small Multimodal Projects economic resiliency projects. Funds up to \$250,000 per project; minimum is \$10,000.
- b. MMOF (Multi-modal Option Funds) is coming up soon. Headquarters has developed a form for the regions to review. TPR should have the materials for a call for projects next month after the Commission determines final allocation and boundaries. A mandatory CDOT review will be required for all applicants.
 - i. Additional discussion on MMOF process; previously awarded projects that need additional funding may need to submit a new application.
- c. TAP-previous round closed last year and next 3-year call will be Spring 2026.
- d. Safe Routes to School – Opening in August and it is expanding to Safe Routes to Parks or other critical locations.
- e. CMAQ (Congestion Mitigation and Air Quality)- Specific to Region 5 and can only be used in San Miguel, Telluride and Mtn. Village, approximately \$600,000
- f. Fed Opportunities
 - i. Bridge investment - Closes August 1.
 - ii. Safe Streets and Roads for All – Planning and Construction, closes May 16. There are more planning dollars available than there have been applications coming in.
 - iii. Active Transportation – Probably better for Planning and Design,
 1. 3 Construction projects nationwide.
 2. Large trail, design costs above \$100,000 for construction projects that are at least \$15,000,000; probably only 3 awards nationwide.

8. Planning | Jessi Spencer

- a. New 10 Year Plan and 2050 Plan
 - i. Focusing on Region Priority Project (RPP) and Strategic Funding governed by the Transportation Commission.
 - ii. Allocates \$50 million per year with regional percentages to each of the 5 CDOT Regions:
 1. Region 3 = 14.3% at about \$7 million and Region 5 approximately \$3.5 million (7.1%)
 - iii. DTD is coming to each TPR with 4 meetings for each TPR, starting in the fall. They will likely be more frequent than quarterly.
 - iv. The Regions reviewed the current priority projects determined by the TPR.

9. **Next GVTPR Meeting:** August 29, 2024, 1:30-3:30pm works because it is a 5th Thursday so there may not be any conflicts.

10. **Next STAC Meeting:** In-person, may be held in Grand Junction

11. Meeting adjourned at 3:02pm



YOUR
TRANSPORTATION
PRIORITIES



POWERED
BY YOU

Gunnison Valley TPR

Meeting #1

August 29, 2024 - Montrose, Colorado



Meeting Purpose

- Establish a set of guided conversations that will help you (as a TPR) develop your final 2050 Regional Transportation Plan (RTP).
- Identify items that uniquely affect the Gunnison Valley Region and make a plan on how to address those items in the future.
- Set the stage for updating the next 10-year plan.
- Our intention is to host ~4 meetings that align with previously scheduled meetings.

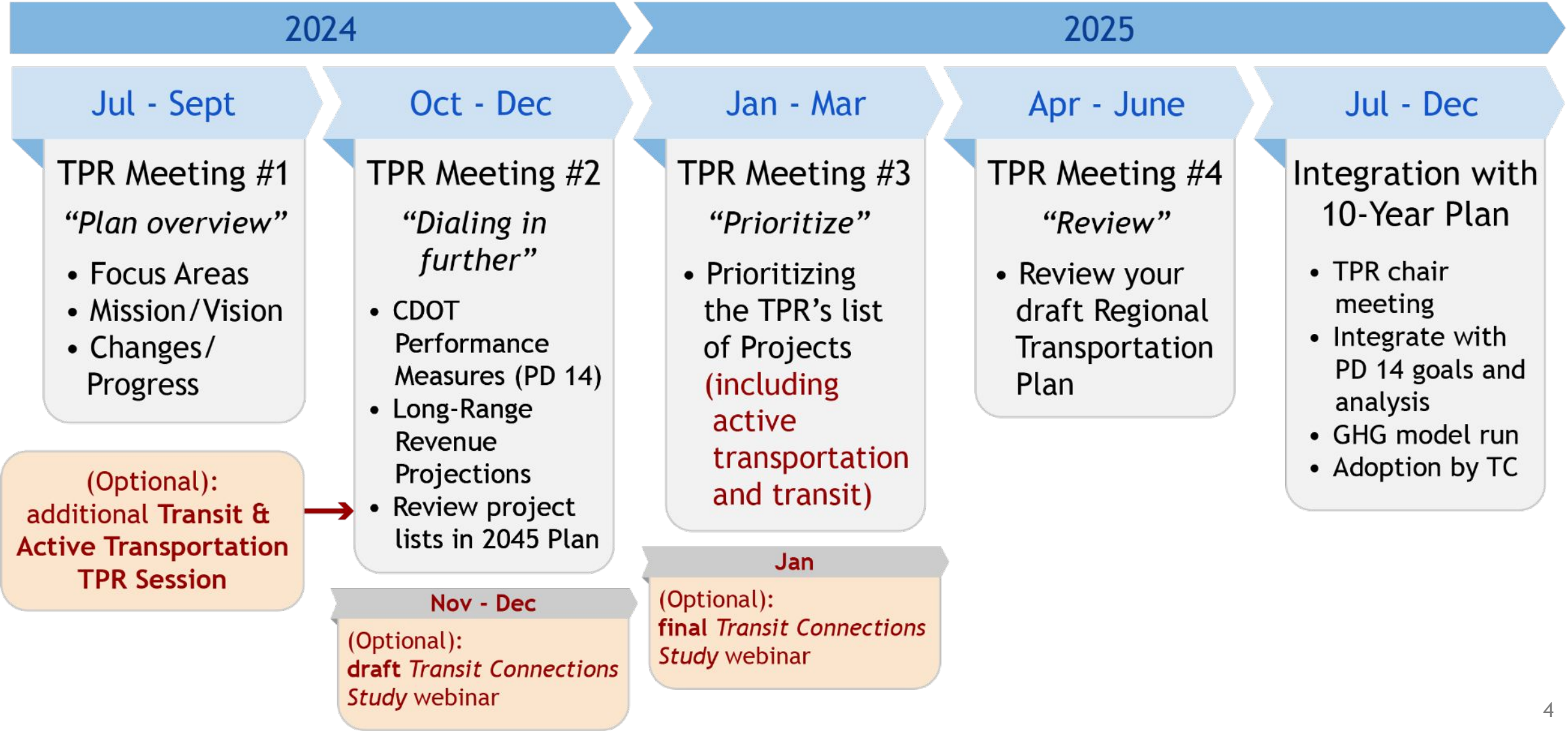


What We Need From You Today

- Your input on:
 - Changes in growth and/or trends that influence transportation since the 2045 RTP?
 - Have your goals and priorities shifted at all compared to what is in the 2045 RTP?
 - A review of baseline data for the 2050 RTP
 - What focus areas would you like to see in your 2050 RTP?



Draft Rural RTP Development Schedule





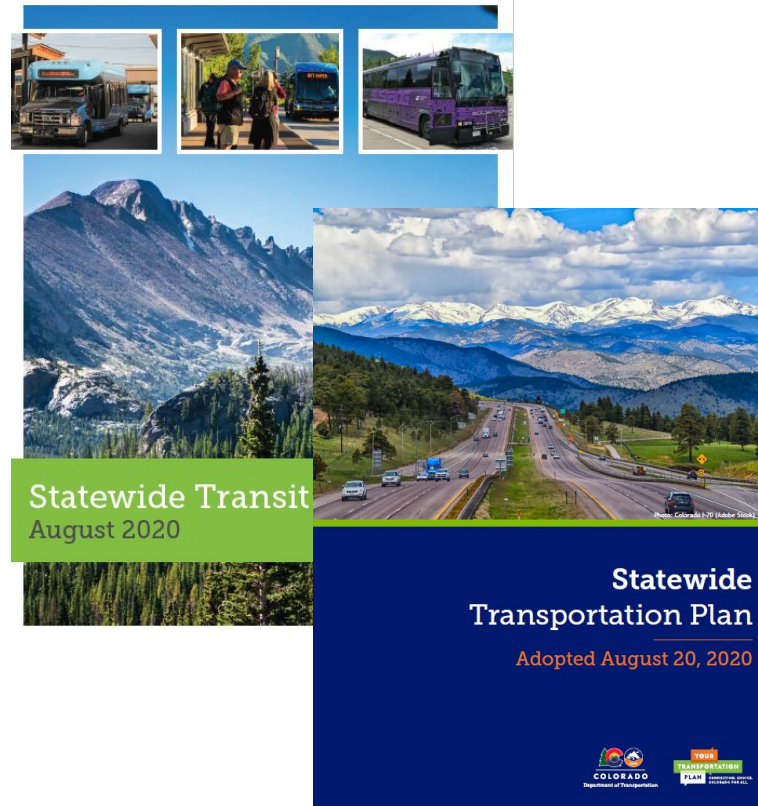
- Setting the Stage: Statewide and Regional Transportation Planning Overview
- Project Accomplishments
- Demographic Overview
- Transportation Data Trends
- Vision and Goals
- Focus Areas
- Public Involvement
- Next Steps



SETTING THE STAGE: STATEWIDE & REGIONAL TRANSPORTATION PLANNING OVERVIEW



Background: From Statewide Vision to Achievable Reality



Regional Plans

Statewide Transportation & Transit Plans

10-Year Plan

4-Year STIP

Data Integration • Corridor Visions • Fact Sheets • Funding • Performance Reporting



State Planning Factors

- Safety
- Fix-it first
- Modal connectivity
- Environment
- Land use considerations, corridor preservation, and military needs
- GHG emission reduction
- Mobility and multimodal choice
- Multimodal management plans
- Freight
- Transit

CRS 43-1-1103(5)

Federal Planning Factors

- Safety
- Preservation
- Modal connectivity
- Environment & planned growth
- Economic vitality
- Accessibility & mobility
- Resiliency & reliability
- Travel & tourism
- Security
- Efficiency

23 CFR §450.206(a)



Draft Planning Cycle Goals

Guiding Principles for Plan Development & Implementation



Advancing Transportation Safety

No matter where you're going or how you're getting there, Colorado is committed to providing you a safe and efficient transportation network so you arrive at your destination safely.



Fix Our Roads

Prioritize strategic investments in Colorado's highways to improve infrastructure conditions.



Sustainably Increase Transportation Choice

Provide alternatives to single occupancy vehicle travel that increase choices and reduce air pollution from transportation.



Make Traveling Safer

- Rise in traffic-related fatalities and serious injuries since 2010.
- Overall goal of vision zero.
- Provide safer options for Vulnerable Roads Users (VRUs).



Fix our roads and maintain our current system

- 3.3% percent of interstates in poor condition - Ranked 47th out of the 50 states.
- Public perception - complaints and news stories
- Continue work and programs from the previous 10-Year Plan on poor interstates and rural road investments



Expand Transit Service to Coloradans

- Crucial initiative to help with Greenhouse Gas (GHG) reduction goals
- Strategic growth
- Reduces congestion
- Provide options to everyone and all communities.



Reduce GHG emissions from the Transportation Sector

- Top sector for GHG emissions - 28 to 30% of all GHG emissions.
- GHG Planning Standard - required reduction of 1.5 Million Metric Tons (mmt) and 1.2 mmt of emissions in new transportation plans.
- Overall goal of reaching net zero emissions by 2050.
- Providing more options for the traveling public to reduce single occupancy vehicle travel



Successful integration = Successful planning.

Without integrated planning, planning activities can become fragmented, resulting in confusion about priorities and use of resources. Some key planning areas that will be integrated within the scope of the Statewide Plan include:

- Greenhouse Gas Mitigation
- Transit & Rail
- Safety
- Active Transportation
- Freight
- Asset Management

These are just a few of the key planning areas for integration.

There are over 25 modal plans, functional plans, and topical areas that we will work to integrate throughout the planning process.



2050 Statewide and Regional Plan Timeline

Draft Condensed 2050 Statewide and Regional Transportation Plan Development Timeline

Version: 8/26/2024



	2024								2025											
	May	Jun	Jul	Aug	Sep	Oct	Nov	Dec	Jan	Feb	Mar	Apr	May	Jun	Jul	Aug	Sep	Oct	Nov	Dec
2050 Plan Development Activities	Revenue Projections																			
	Policy Directive 14																			
	Plan Integration																			
	Public Involvement Strategy																			
Planning Partner Outreach and Coordination	TPR and MPO Coordination																			
Public Involvement	Conduct Public and Stakeholder Engagement																			
2050 Regional Transportation Plan Review and Adoption													Public Review							
2050 SWP Review and Adoption													FHWA/FTA Review							
													Adoption by Transportation Commission							
New 10-Year Plan Covering FY 2027-2036													Update Project Database							
													Prioritize 10yr plan projects using PD 14							
													GHG Model Run of 10-yr Plan Projects							
													Adoption by Transportation Commission							



PROJECT ACCOMPLISHMENTS



10yr Plan Under Construction and Completed Gunnison Valley Projects - Highways

10 Year Plan ID	Counties	Corridor	Project Description	Project Type	Status
32	Montrose, Ouray	US 550	US 550 Montrose to Ouray County Line Safety Improvements	Highways	Construction
33	Gunnison	US50	US 50 Windy Point/Blue Creek Canyon	Highways	Construction
34	Gunnison	US50	US 50 Passing Lanes Blue Mesa	Highways	Completed
35	Delta	US 50	US 50 Grand Junction to Delta Repairs	Highways	Completed
85	Ouray	US550	US 550 Pacochupuk South Roadway Mobility, Safety, and Billy Creek Wildlife Improvements	Highways	Construction



10yr Plan Completed Gunnison Valley TPR Projects - Rural Paving Projects

10 Year Plan ID	Counties	Corridor	Project Description	Project Type	Status
44	Delta	CO92	CO 92 between Hotchkiss and Crawford	Rural Paving	Completed
45	Delta	CO92	CO 92 Crawford East	Rural Paving	Completed
51	Gunnison, Hinsdale	CO149	CO 149 Lake City North; CO 149 North of Creed	Rural Paving	Completed
56	Gunnison	CO114	CO 114 Parlin West; CO 114 US 50 East	Rural Paving	Completed
81	Hinsdale, Gunnison	CO149	CO 149 Lake City North; CO 149 North of Creed	Rural Paving	Completed
82	Montrose, San Miguel	CO141	CO 141 Slickrock and CO 145 Redvale	Rural Paving	Completed
83	Montrose	CO141	CO 141 North of Naturita	Rural Paving	Completed
2645	Delta	CO65	CO 65 between CO 92 and Orchard City	Rural Paving	Construction
2654	Delta	US50	US 50 South of Delta	Rural Paving	Construction
2657	Montrose	US50	US 50 South of Olathe	Rural Paving	Construction



Region 3 Planning Gunnison Valley TPR - Planned FY27+ Projects

Planning Project ID and Phase	Project Name
1462 Scoping 0%	US 50 Asset Management North of Montrose
1469 Scoping 0%	US 50 Safety East of Gunnison
1107 Design 30% Phase II	CO 92 Safety Improvements West of Hotchkiss
1484 Scoping 0%	Shoulder Improvements in the Gunnison Valley Transportation Planning Region



Region 5 Planning Gunnison Valley TPR - Planned FY27+ Projects

Planning Project ID and Phase	Project Name
1133 Scoping	US 550 Bily Creek Safety and Widening
1482 Design	Multimodal Improvements on CO 145



YOUR
TRANSPORTATION
PRIORITIES



POWERED
BY YOU

Region 5 10-Year Plan Accomplishments

8/1/2024



0082 - CO 141 Slickrock and CO 145 Redvale RRST



10 Year Plan 2023 - REGION 5

Total Projects Cost

\$15M

Total Strategic Funds

\$10M

CDOT Strategic Funds



Projects by Status

Status	Project Count	%
Complete	1	100%
Total	1	100%

Total Cost by Project Type

Project Type	Total Cost	%
Rural Paving	\$15M	100%
Total	\$15M	100%

H = Highway, H,T = Highway & Transit, T = Transit, RP = Rural Paving

Region Projects

ID	Project	Corridor	Type	Status	Total Cost	CDOT Strategic Funds FY19-26	CDOT Strategic Funds FY27+ (potential)	Other CDOT Funds	BTE	CTIO	Grants	Local	Est Constr Start Year	Est Constr End Year
0082	CO 141 Slickrock and CO 145 Redvale	CO141	RP	Complete	\$15.4M	\$10.0M		\$5.4M					2020	2020





0083 - CO 141 North of Naturita RRST



10 Year Plan 2023 - REGION 5

Total Projects Cost

\$12M

Total Strategic Funds

\$4M

CDOT Strategic Funds



Projects by Status

Status	Project Count	%
Complete	1	100%
Total	1	100%

Total Cost by Project Type

Project Type	Total Cost	%
Rural Paving	\$12M	100%
Total	\$12M	100%

Region Projects

ID	Project	Corridor	Type	Status	Total Cost	CDOT Strategic Funds FY19-26	CDOT Strategic Funds FY27+ (potential)	Other CDOT Funds	BTE	CTIO	Grants	Local	Est Constr Start Year	Est Constr End Year
0083	CO 141 North of Naturita	CO141	RP	Complete	\$12.1M	\$4.1M		\$8.0M					2020	2021

H = Highway, H,T = Highway & Transit, T = Transit, RP = Rural Paving





0051/0081 - CO 149 North of Creek RRST



10 Year Plan 2023 - REGION 5

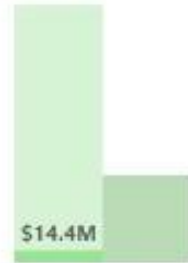
Total Projects Cost

\$15M

Total Strategic Funds

\$14M

CDOT Strategic Funds



● FY19-26 ● FY27+ (potential)

Projects by Status

Status	Project Count	%
Complete	1	100%
Total	1	100%

Total Cost by Project Type

Project Type	Total Cost	%
Rural Paving	\$15M	100%
Total	\$15M	100%

Region Projects

H = Highway, H,T = Highway & Transit, T = Transit, RP = Rural Paving

ID	Project	Corridor	Type	Status	Total Cost	CDOT Strategic Funds FY19-26	CDOT Strategic Funds FY27+ (potential)	Other CDOT Funds	BTE	CTIO	Grants	Local	Est Constr Start Year	Est Constr End Year
0081 0051	CO 149 North of Creede	CO149	RP	Complete	\$14.6M	\$14.4M		\$0.1M					2022	2022





0056/0084 - CO 114 US 50 East RRST



10 Year Plan 2023 - REGION 5

Total Projects Cost

\$13M

Total Strategic Funds

\$13M

CDOT Strategic Funds



Projects by Status

Status	Project Count	%
Construction	1	100%
Total	1	100%

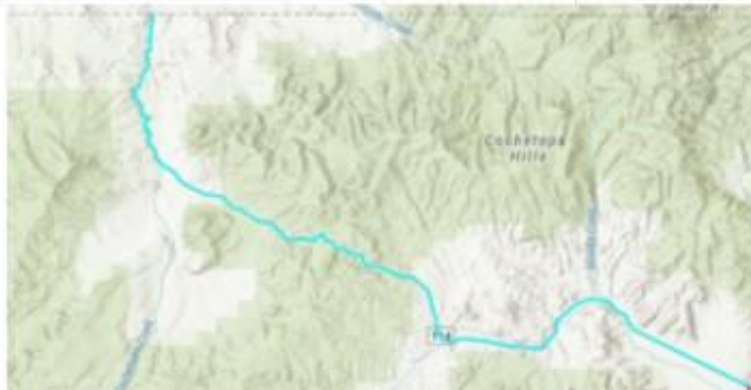
Total Cost by Project Type

Project Type	Total Cost	%
Rural Paving	\$13M	100%
Total	\$13M	100%

Region Projects

H = Highway, H,T = Highway & Transit, T = Transit, RP = Rural Paving

ID	Project	Corridor	Type	Status	Total Cost	CDOT Strategic Funds FY19-26	CDOT Strategic Funds FY27+ (potential)	Other CDOT Funds	BTE	CTIO	Grants	Local	Est Constr Start Year	Est Constr End Year
0056 0084	CO 114 US 50 East	CO114	RP	Construction	\$12.7M	\$12.7M							2023	2023





0085 - Pakochupuk South and Billy Creek



10 Year Plan 2023 - REGION 5

Total Projects Cost
\$16M

Total Strategic Funds
\$13M

CDOT Strategic Funds



Projects by Status

Status	Project Count	%
Design	1	100%
Total	1	100%

Total Cost by Project Type

Project Type	Total Cost	%
Highway	\$16M	100%
Total	\$16M	100%

Region Projects

H = Highway, H,T = Highway & Transit, T = Transit, RP = Rural Paving

ID	Project	Corridor	Type	Status	Total Cost	CDOT Strategic Funds FY19-26	CDOT Strategic Funds FY27+ (potential)	Other CDOT Funds	BTE	CTIO	Grants	Local	Est Constr Start Year	Est Constr End Year
0085	US 550 Pakochupuk South Roadway Mobility, Safety, and Billy Creek Wildlife Improvements	US550	H	Design	\$15.7M	\$13.5M		\$2.2M				\$0.1M	2023	2024





DEMOGRAPHIC OVERVIEW



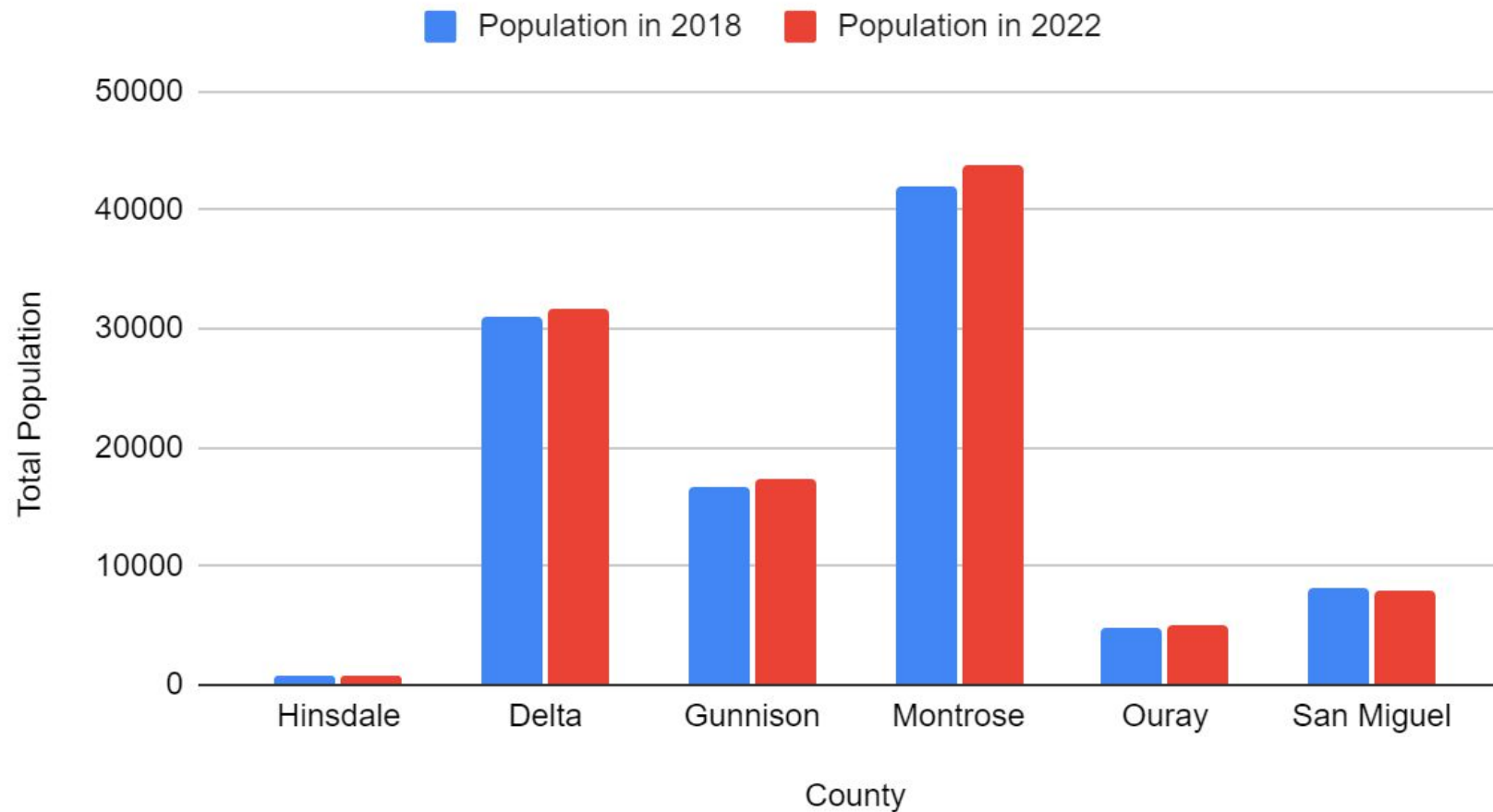
Population Changes from 2018 to 2022

Population	2018	2022	Percent Change
Hinsdale	801	779	-2.75%
Delta	31,033	31,581	+1.77%
Gunnison	16,681	17,269	+3.52%
Montrose	42,084	43,799	+4.08%
Ouray	4,736	5,088	+7.43%
San Miguel	8,154	7,993	-1.97%
TPR	103,489	106,509	+2.92%
Statewide	5,534,240	5,838,736	+5.50%



Population Changes from 2018 to 2022

Total Population in 2018 and Total Population in 2022





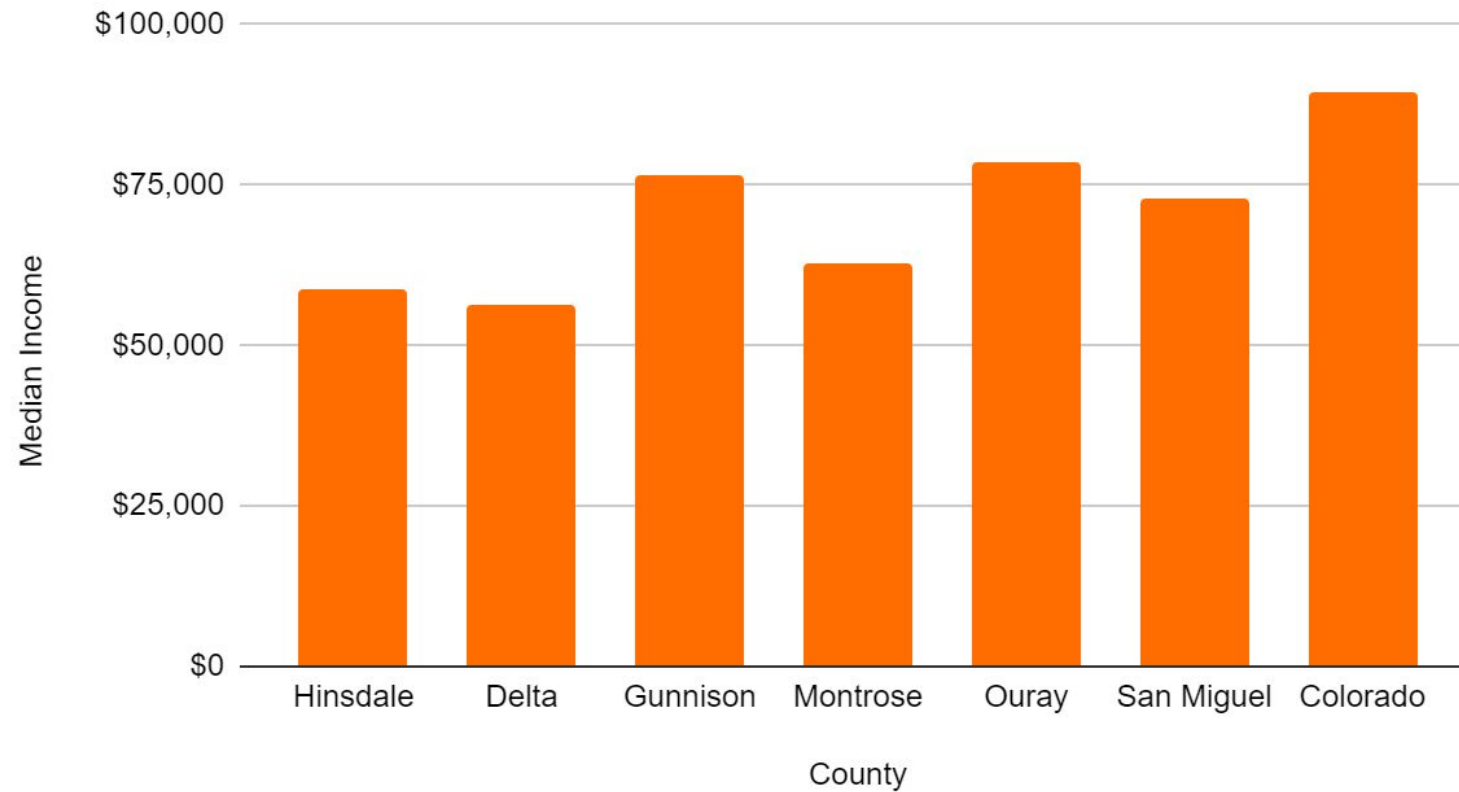
Demographics: Employment

Employment	2018	2022	Percent Change
Hinsdale	440	445	+0.23%
Delta	13,055	13,140	+0.65%
Gunnison	12,163	12,895	+6.02%
Montrose	20,911	21,850	+4.49%
Ouray	2,934	3,178	+8.32%
San Miguel	7,550	7,943	+5.21%
TPR	57,053	59,451	+4.2%
Colorado	3,392,903	3,583,254	+5.61%



Demographics: Household Income

Median Income by County

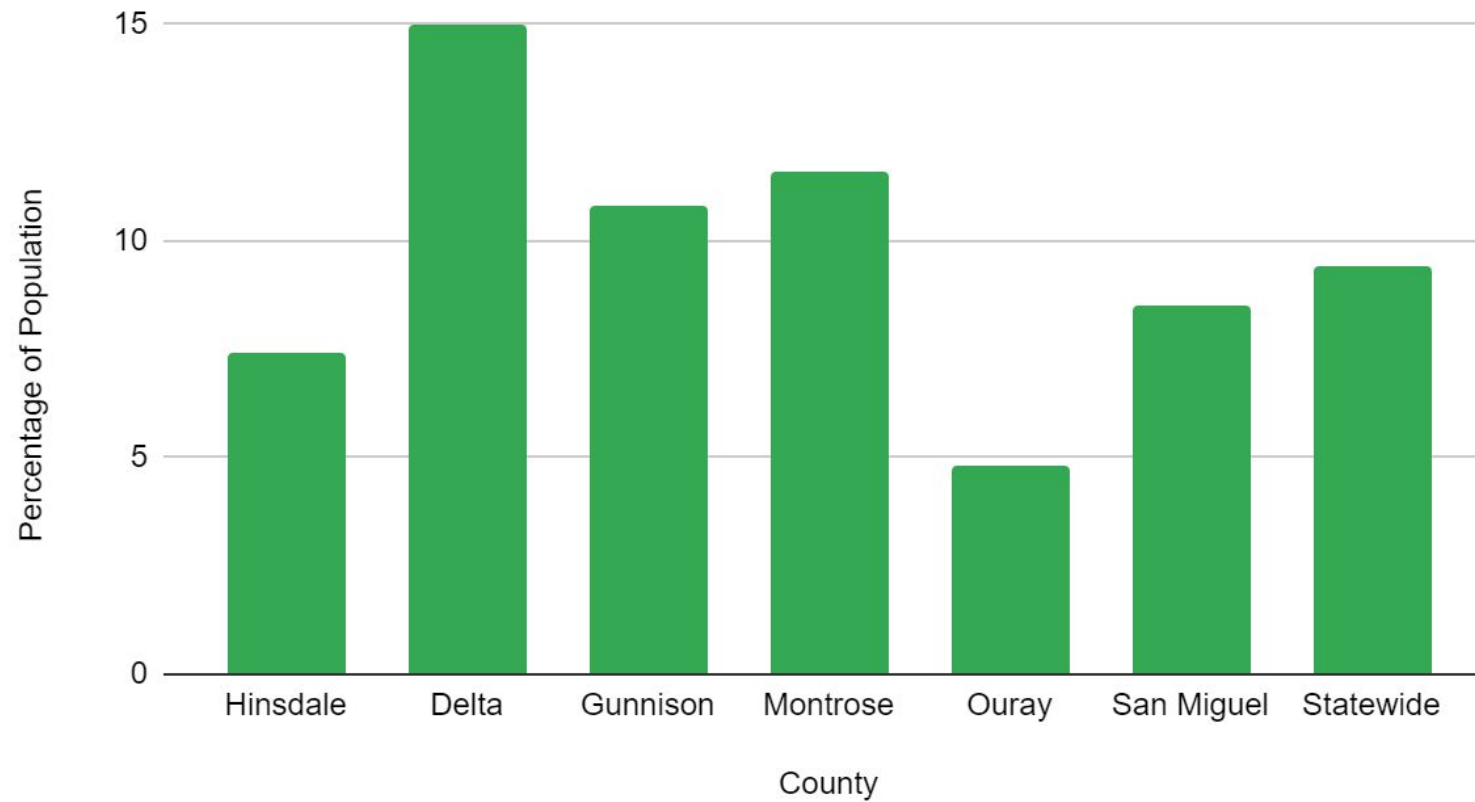


Data from 2020 US Census



Demographics: Poverty Level

Percentage of People Living in Poverty by County

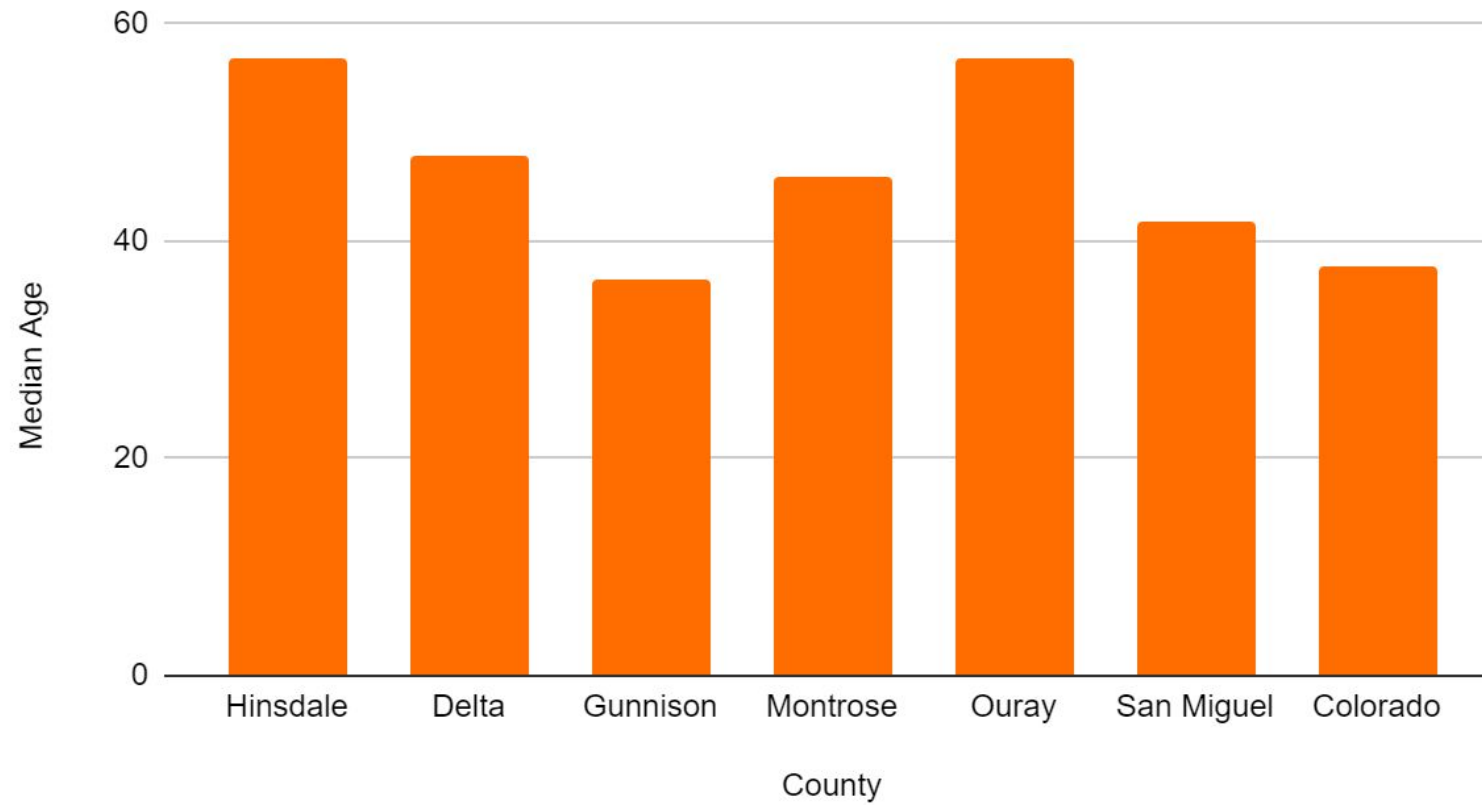


Data from 2020 US Census



Demographics: Age

Median Age by County



Data from 2020 US Census

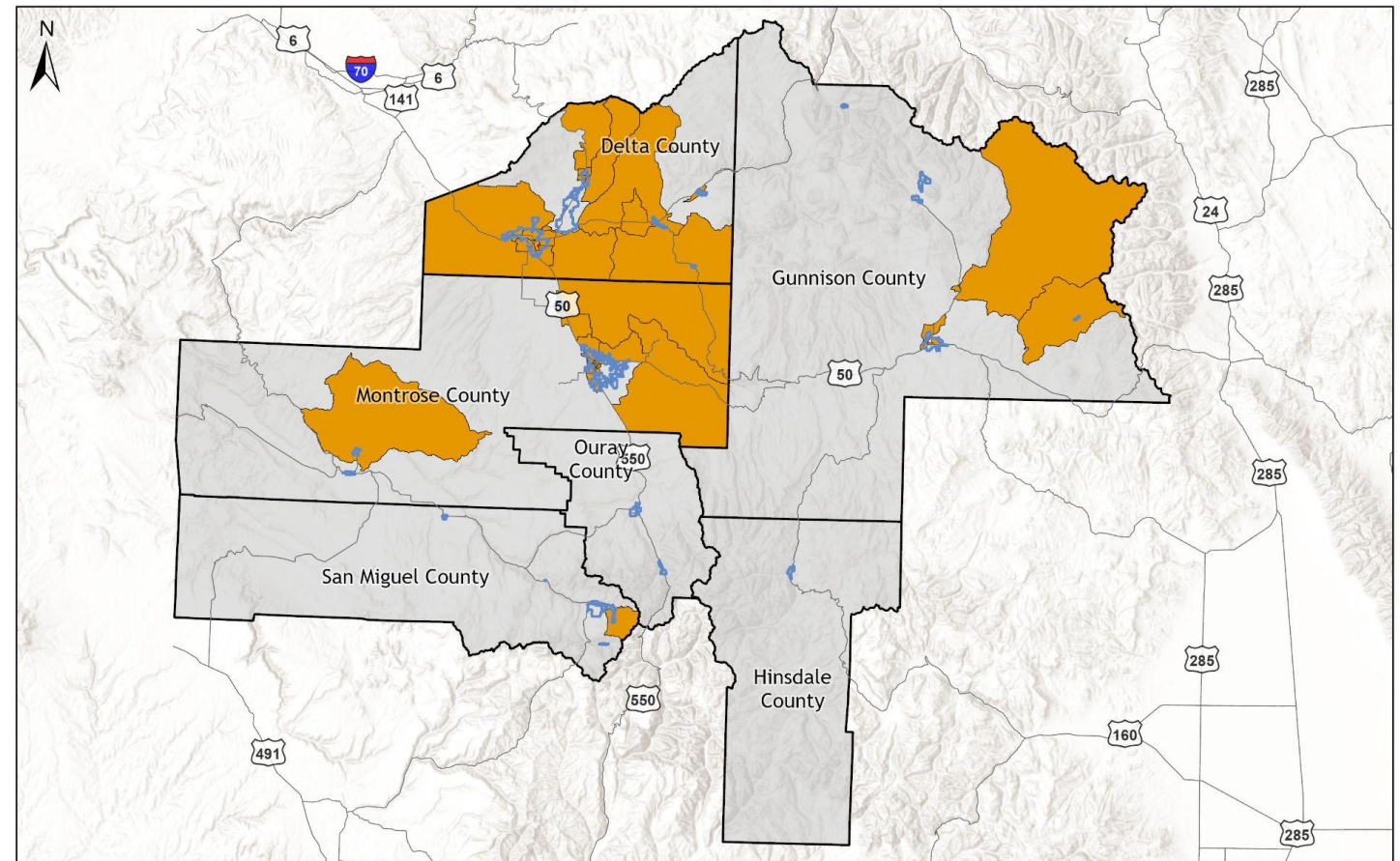


Demographics: Disproportionately Impacted Communities

Disproportionately Impacted Community is defined by meeting one or more of the following criteria:

- 40% or more of the population is below 200% of the federal poverty level
- 50% or more of area households spend more than 30% of household income on housing
- 40% or more of population identifies as people of color
- 20% or more of area population is linguistically isolated
- Community can present evidence of a history of environmental racism
- The community is a mobile home park

Gunnison Valley Disproportionately Impacted Communities



Legend:
■ DI Communities
□ City and Town Boundaries
□ Gunnison Valley Transportation Planning Region



0 10 20 Miles
Data Sources: CDOT June 2024 and U.S. Census Bureau 2020
Created: July 2024



Demographics: Race

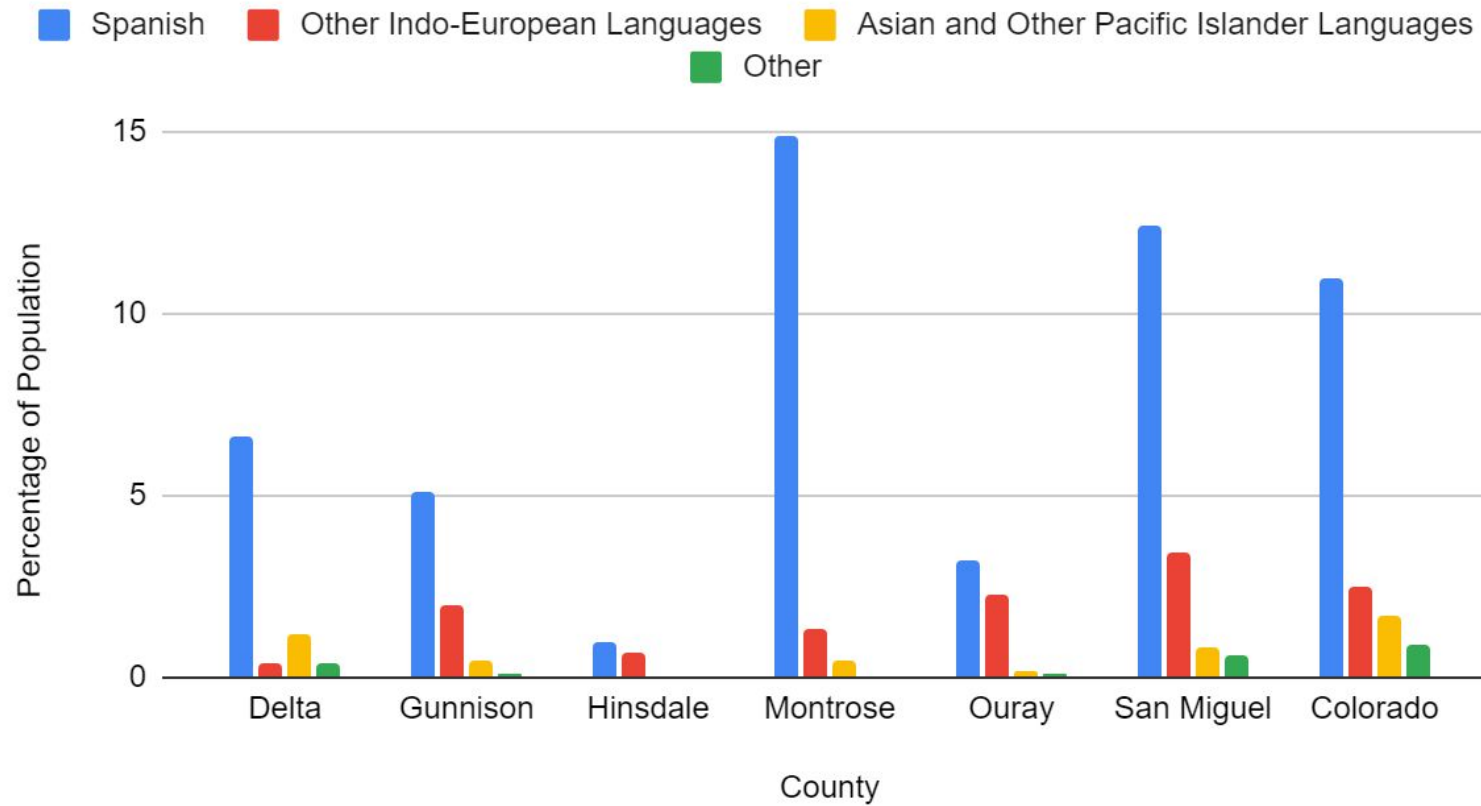
Race	American Indian and Alaska Native	Asian	Black or African American	Hispanic or Latino	Native Hawaiian and Other Pacific Islander	Not Hispanic or Latino	Some other Race	Two or More Races	White
Hinsdale	0.76%	0.38%	1.02%	3.81%	0.13%	87.94%	0.76%	7.36%	89.59%
Delta	0.94%	0.78%	0.46%	13.88%	0.02%	79.84%	5.64%	8.42%	83.72%
Gunnison	1.2%	0.72%	0.52%	9.48%	0.04%	84.25%	3.97%	6.94%	86.61%
Montrose	1.35%	0.79%	0.42%	21.15%	0.08%	72.93%	9.1%	10.03%	78.25%
Ouray	0.33%	0.57%	0.33%	5.99%	0.08%	88.39%	1.9%	6.59%	90.19%
San Miguel	1.14%	0.68%	0.26%	10.93%	0.02%	83.71%	4.89%	7.25%	85.75%
TPR	1.14%	0.75%	0.44%	15.46%	0.05%	78.49%	6.5%	8.66%	82.46%
Colorado	1.28%	3.46%	4.07%	21.89%	0.18%	8.04%	12.26%	65.13%	70.72%

Data from 2020 Census



Demographics: Language

Non-English Languages Spoken at Home



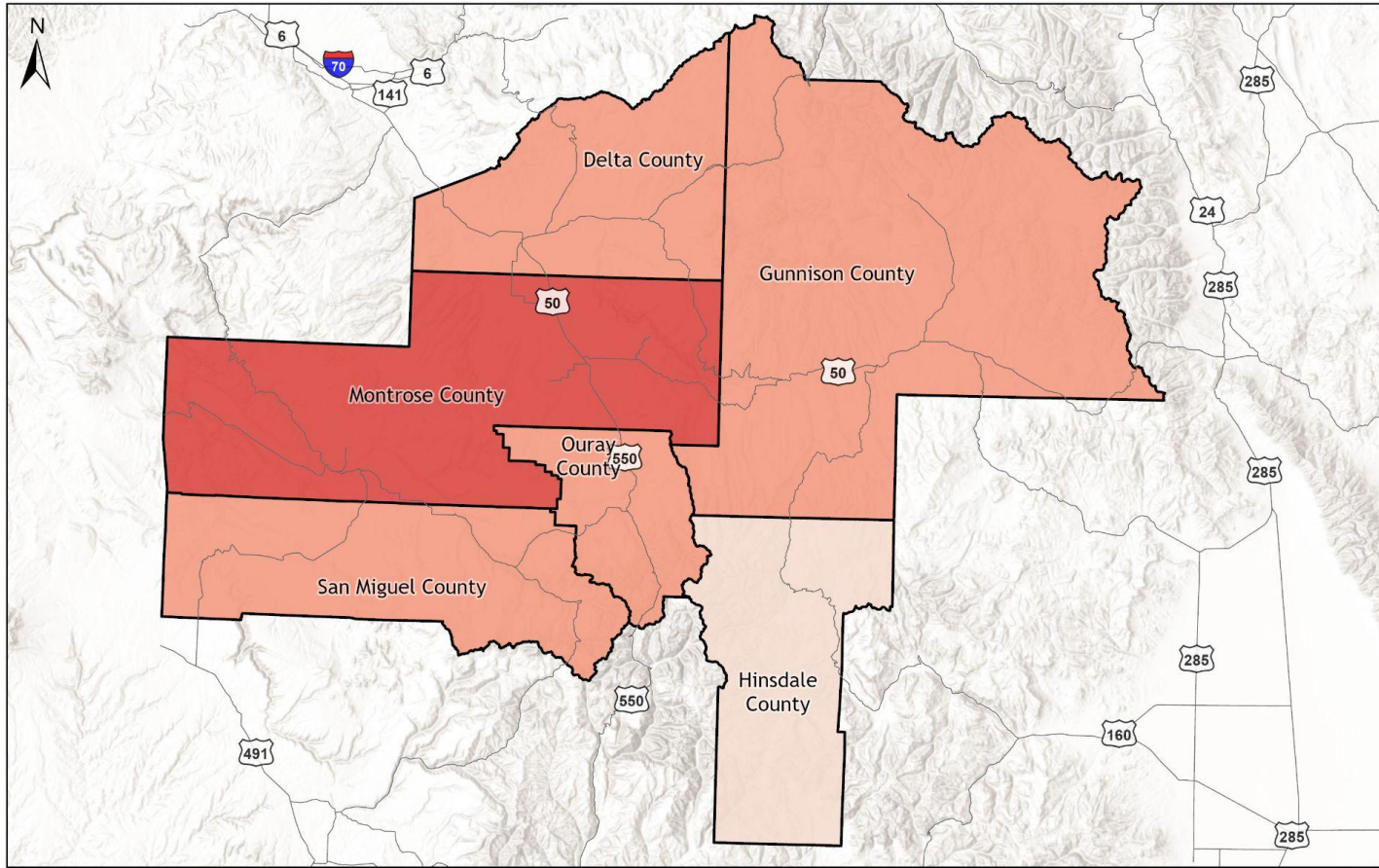


TRANSPORTATION DATA TRENDS



Safety: Vehicle Crashes by County 2018-2022

Gunnison Valley Vehicle Crashes by County (2018-2022)



Crashes per Vehicle
Mile Traveled

- 0.00134
- 0.00134 - 0.00243
- 0.00243 - 0.00293

Gunnison Valley
Transportation Planning
Region



0 10 20
Miles

Data Sources: CDOT Traffic Safety
and Engineering Services 2022
Created: July 2024

Crash Severity Types:

Level 1: No Injury	Minor Crash
Level 2: Possible Injury	
Level 3: Evident Non- Incapacitating Injury	
Level 4: Incapacitating Injury	Severe Crash
Level 5: Fatal Injury	

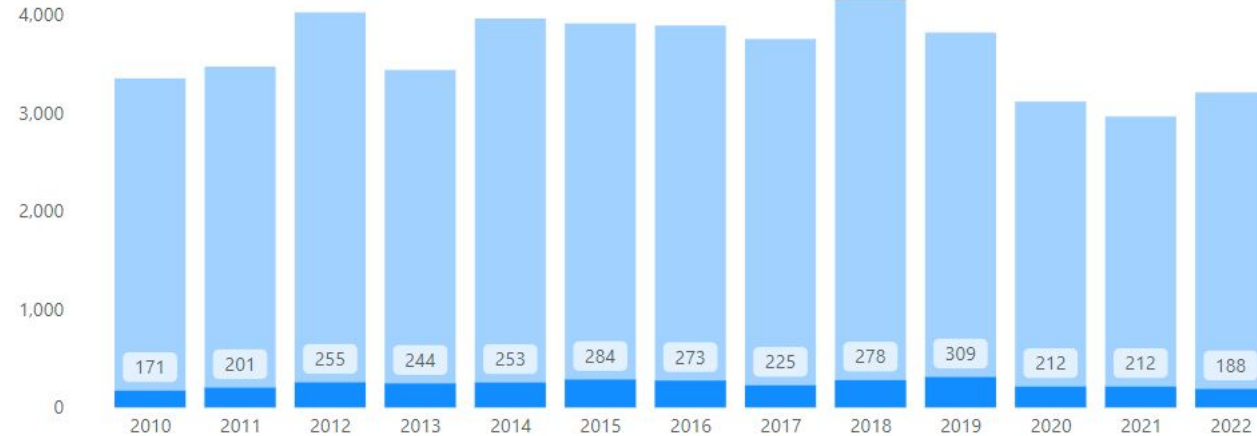


Wild Animal Crashes by County Dashboard

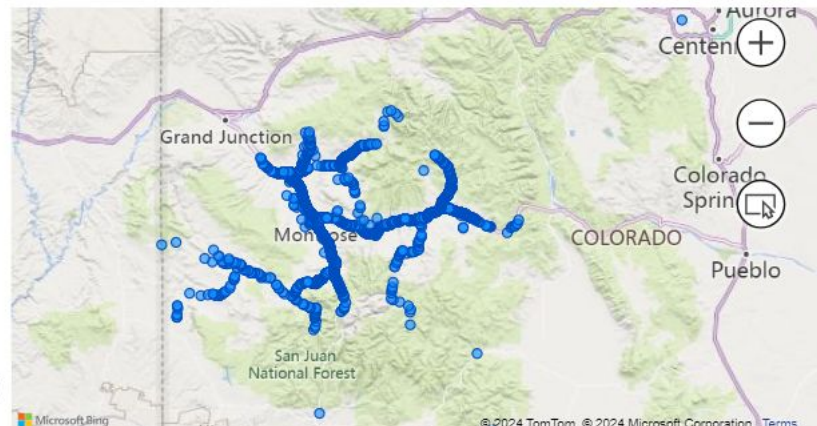
Wild Animal Crashes by County

County	Total Crashes	Occupants Killed	Occupants Injured
DELTA	657	2	54
GUNNISON	861	0	51
HINSDALE	14	1	2
MONTROSE	969	0	51
OURAY	448	0	36
SAN MIGUEL	156	1	22
Total	3,105	4	216

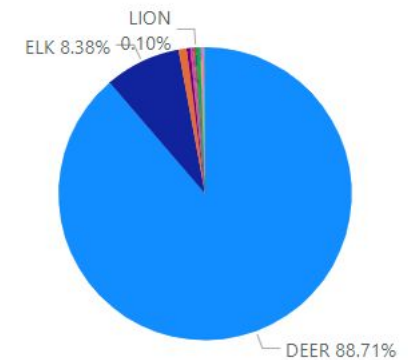
Wild Animal Crashes by Year



Wild Animal Crash Locations



Wild Animal Types

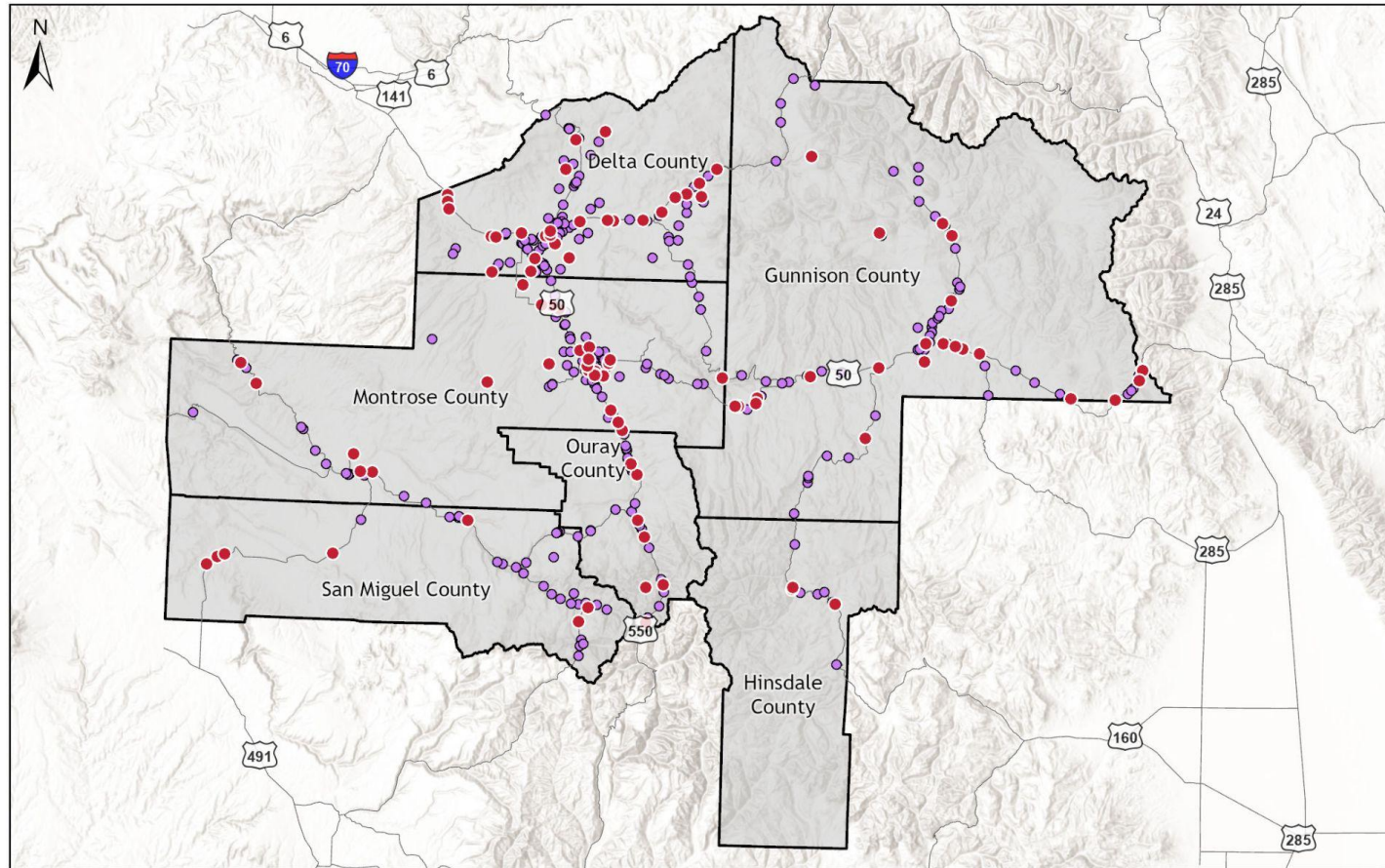


Posted: 7/11/2024
Data subject to change



Safety: All Fatalities and Serious Injuries 2018-2022

Gunnison Valley Vehicle Crashes by County (2018-2022)



- Fatalities 2018-2022
- Serious Injuries 2018-2022
- Gunnison Valley Transportation Planning Region



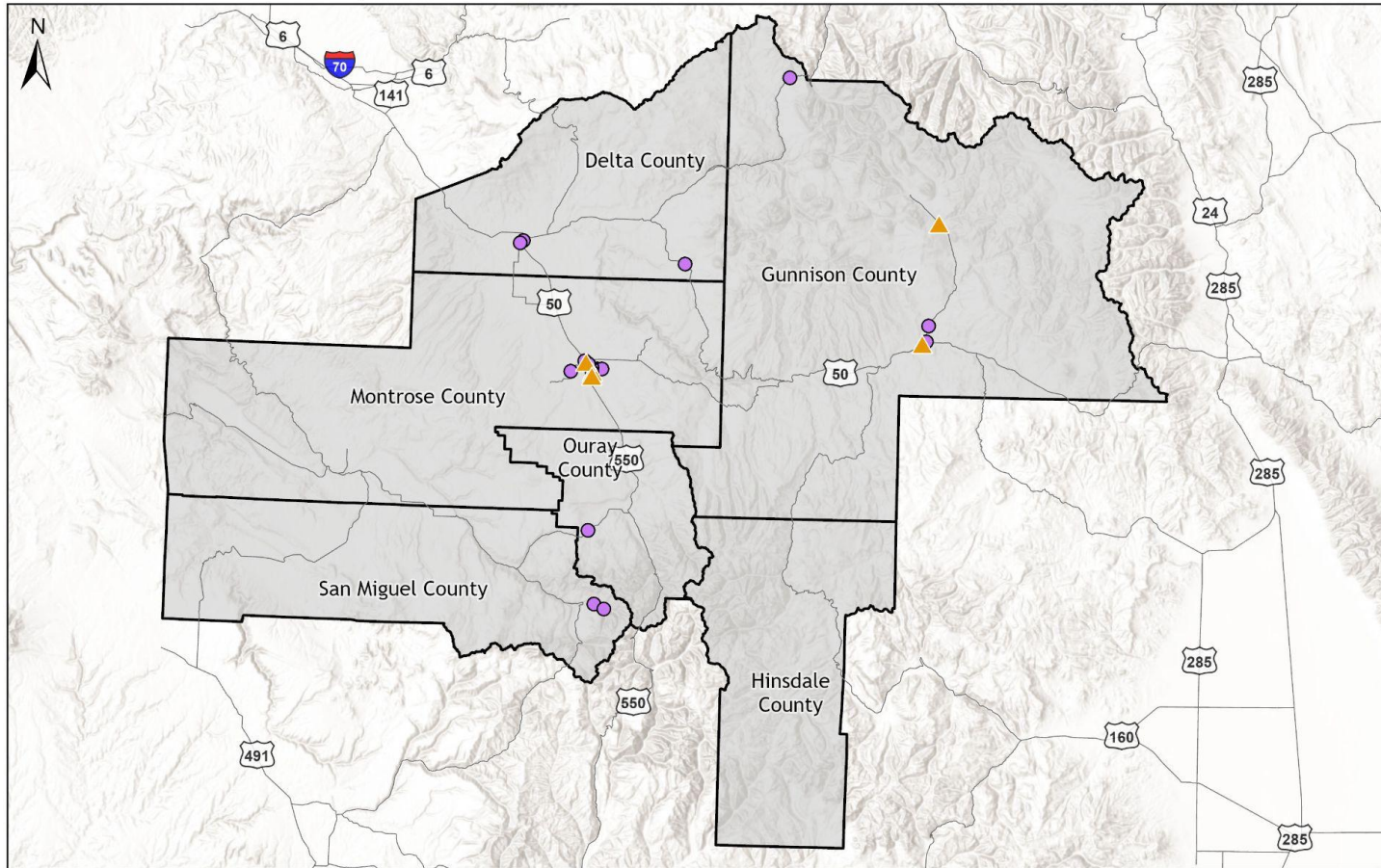
0 10 20 Miles

Data Sources: CDOT Traffic Safety and Engineering Services 2022
Created: July 2024



Safety: Vulnerable Road Users Fatalities and Serious Injuries

Gunnison Valley Vulnerable Road User Fatalities and Serious Injuries (2018-2022)



Vulnerable Road Users (VRUs) is defined, by the Federal Highway Administration (FHWA), as people walking, riding bicycles and rideable toys (e.g. scooters or skateboards), people using personal mobility devices (e.g. walkers or wheelchairs), and people on foot working in work zones. Does not include motorcyclists.

- ▲ Non-Motorist Fatalities 2018-2022
- Non-Motorist Serious Injuries 2018-2022

■ Gunnison Valley Transportation Planning Region



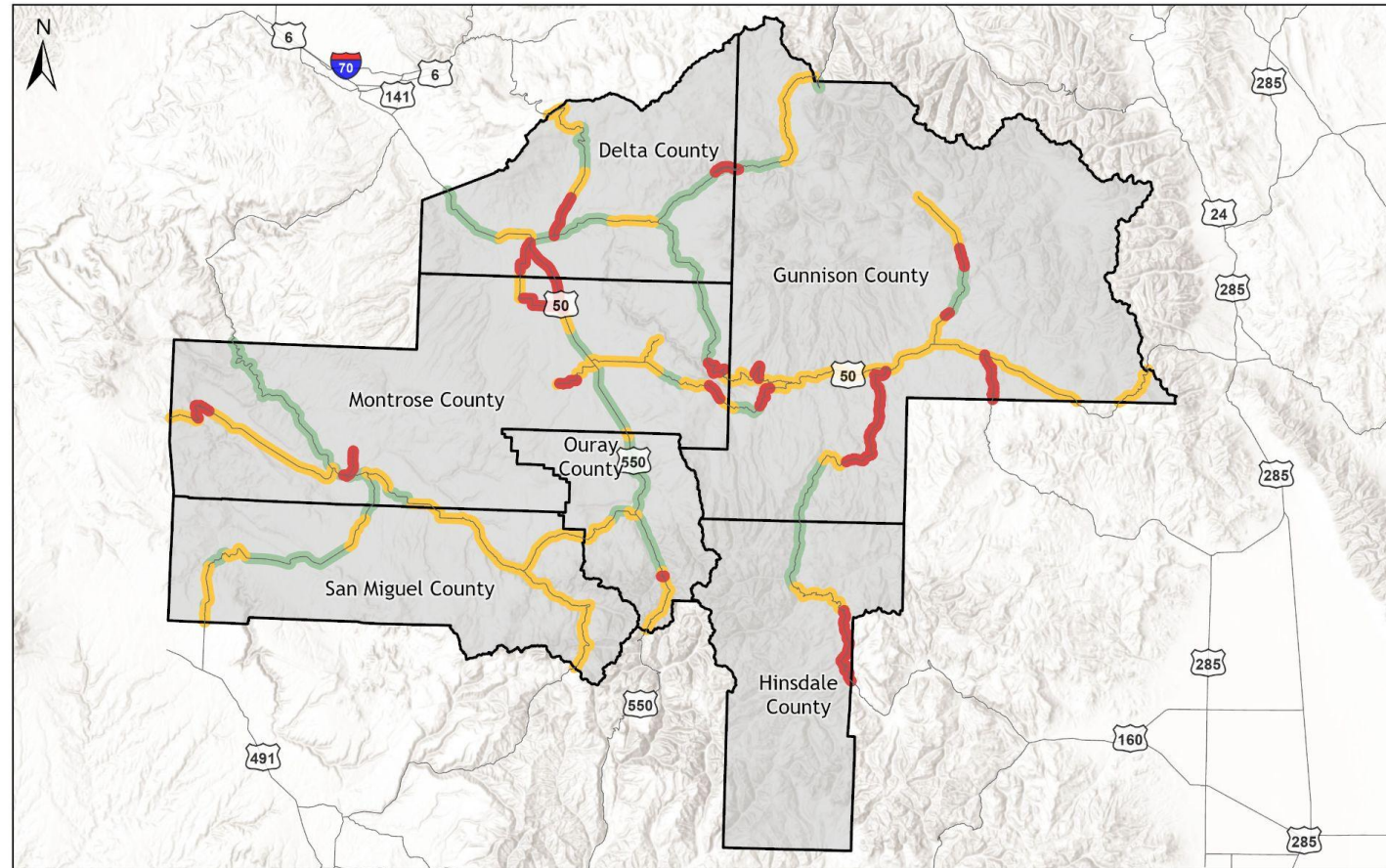
0 10 20 Miles

Data Sources: CDOT Traffic Safety and Engineering Services 2022
Created: July 2024



Asset Management: Drivability Life - Highways

Gunnison Valley Highway Drivability Life



Highway Drivability Life

- High
- Moderate
- Low

Gunnison Valley Transportation
Planning Region



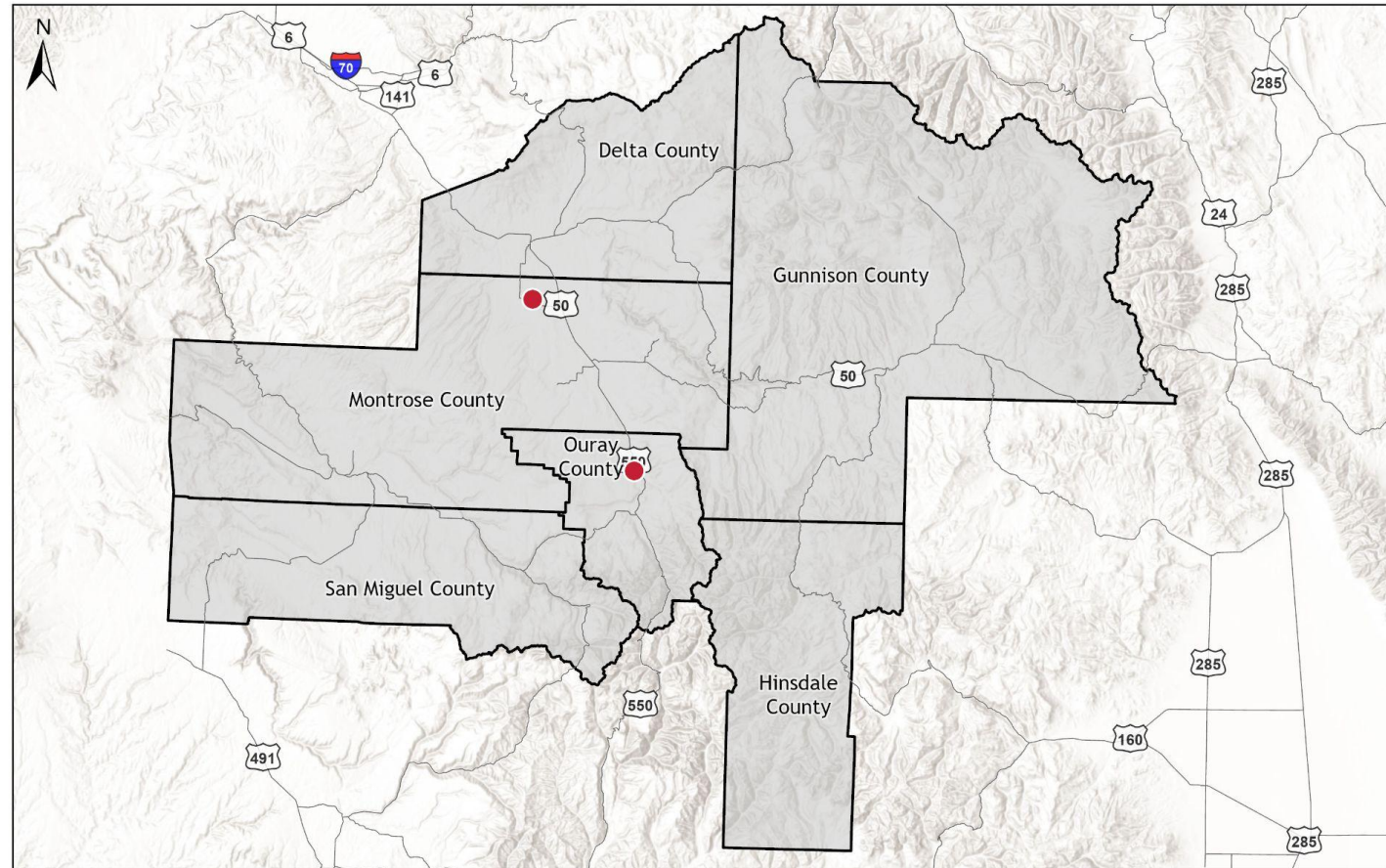
0 10 20 Miles

Data Sources: CDOT OTIS 2022
Created: July 2024



Asset Management: Bridges in Poor Condition

Gunnison Valley Bridges in Poor Condition



● Bridges in Poor Condition

■ Gunnison Valley Transportation Planning Region



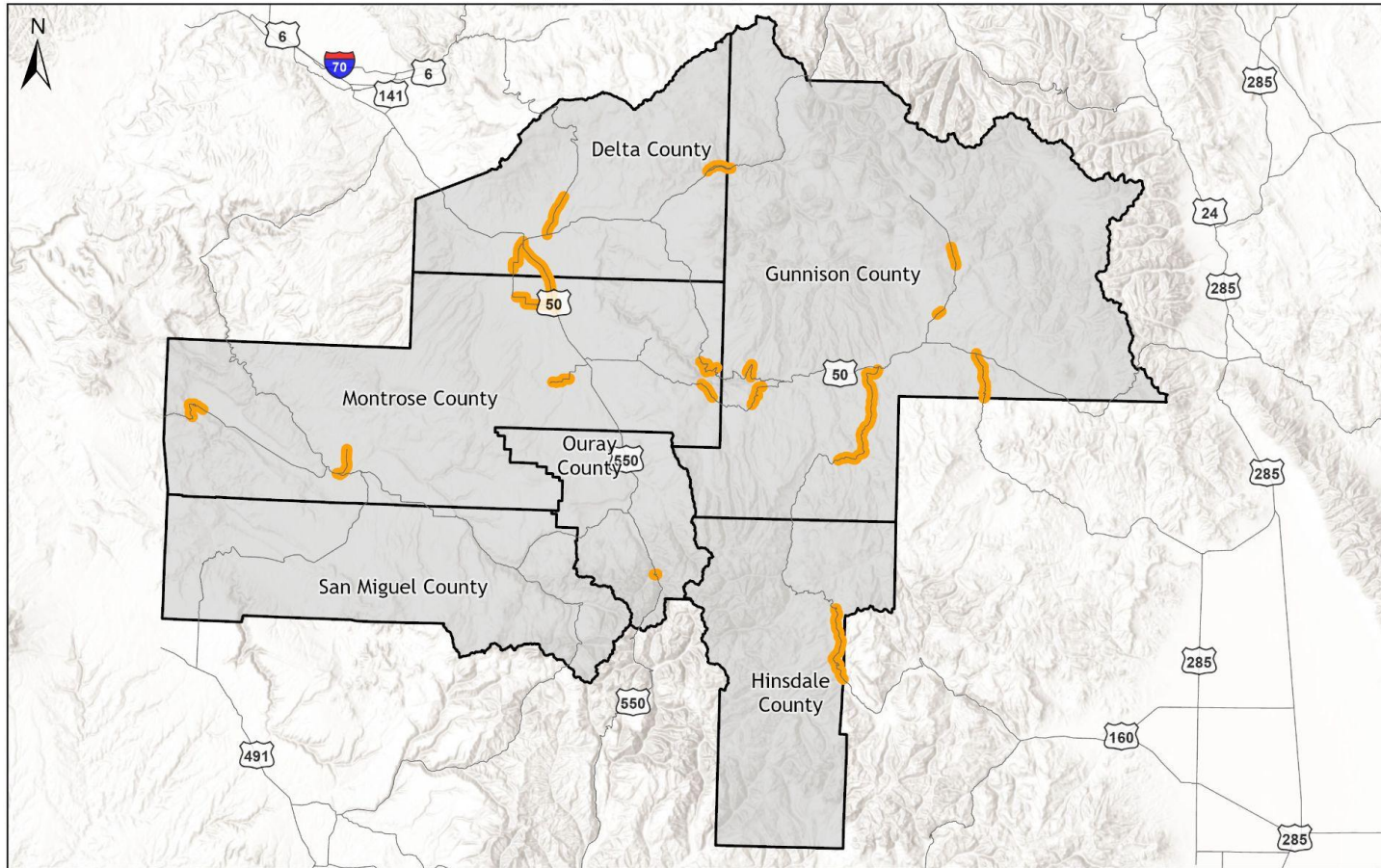
0 10 20 Miles

Data Sources: CDOT Staff Bridge 2023
Created: July 2024



Asset Management: Roadways in Poor Condition

Gunnison Valley Roadways in Poor Condition



Note: Data presented may not reflect all recently completed projects, due to a slight lag in the ability to update asset data.

— Roadways in Poor Condition

— Gunnison Valley Transportation Planning Region



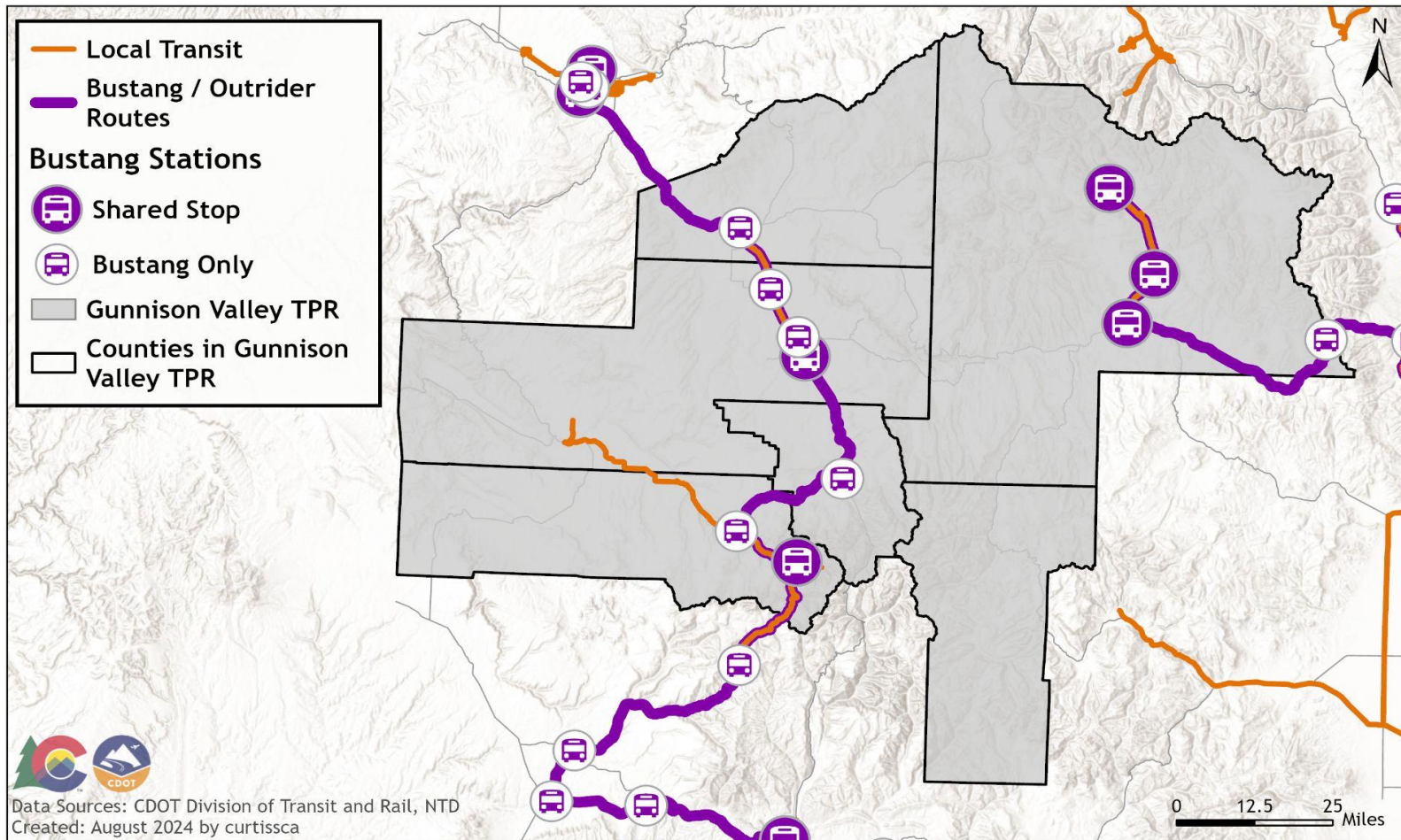
0 10 20 Miles

Data Sources: CDOT OTIS 2022
Created: July 2024



Mobility: Current State of Transit

Gunnison Valley TPR - Current State of Transit



Do you have feedback on the transit data we've collected?

Link:

<https://docs.google.com/forms/d/1ujbRvHSBOvZvAYc7qZVB3z-l8dzRT42NoUr6cJBLjCc/prefill>

Discussion Question: Are there other transportation data needs that would help with regional discussions and decision-making?



Mobility: Per Capita Transit Ridership by Region

Provider	Service Area	Type of Service	Span of Service	Fares	2022 Annual Ridership	2022 Ops & Admin Budget	2022 Vehicle Revenue Miles	2022 Vehicle Revenue Hours
All Points Transit	Regional Multicounty: Delta, Montrose, Ouray, San Miguel	Deviated Fixed Route., Demand Response	Monday - Friday 6:30 AM – 7:00 PM	\$4/local ride \$10/ regional or demand response	47,537	\$ 950,828	315,181	30,087
Gunnison Valley Regional Transportation Authority (GVRTA)	Gunnison County	Commuter Bus	Daily: 5:30 AM – 12:15 AM (varies by season)	Free	130,076	\$ 713,726	635,069	23,341
Mountain Express	Municipalities: Crested Butte, Mount Crested Butte, Gothic	Fixed Route, Specialized Services	Daily: 7:10 AM – 12:00 AM (varies by season)	Free	535,659	\$ 884,846	222,498	20,476
Town of Mountain Village	Multi-county: San Miguel, Montrose, Ouray Interregional: Gunnison Valley and Southwest TPRs Gondola Service between Mountain Village and Telluride	Fixed Route, Commuter Bus, Specialized Services, Vanpool, Aerial Tramway	Daily: 6:30 AM – 12:00 AM (varies by season)	Free (except commuter routes: \$2/ride)	3,115,446	\$ 392,296	4,069,276	362,221
Town of Telluride	Municipality	Fixed Route, Specialized Services	Daily: 7:00AM - 10:00 PM (varies by season)	Free	71,197	\$ 382,838	9,244	196,384
San Miguel Authority for Regional Transportation (SMART)	County & Interregional: Gunnison Valley and Southwest TPRs	Fixed Route, Vanpool	Daily: 6:50 AM - 10:00 PM	Free rides on Lawson Hill route; \$1-\$3 for all other routes	68,680	\$ 535,872	244,951	14,049



New Regional Influences

What changes are influencing the region and travel patterns?

- Economic changes? (growth in tourism, military development, etc)
- Demographic and income changes? (housing cost burden, growth patterns, etc)
 - What areas of the region are growing fastest?
- New or planned centers for housing and jobs?
 - Major employment facilities, retail, community centers, educational facilities
 - Where are existing and emerging "Neighborhood Centers" where transit can be connected to housing and jobs?



VISION AND GOALS



Vision:

The Gunnison Valley TPR will accommodate the Region's existing and future multimodal transportation needs by maintaining a safe, convenient, reliable, and efficient transportation network that supports the economic growth of the Region by providing transportation choice for residents, visitors, and tourists of the Region.



2045 Gunnison Valley RTP Goals

- Provide mobility to the traveling public at an acceptable level of service
- Preserve and enhance the Region's overall economic health, providing for energy development and freight movement reliability
- Maintain the transportation system in the most efficient manner possible
- Provide new integrated intermodal access and mobility options with particular emphasis on developing new bike and transit travel options »
 - Preserve, maintain, and enhance existing transit services » » » »
 - Provide additional general public transit service within and between communities
 - Improve and promote transportation options
 - Increase transit funding through public and private mechanisms
 - Integrate general public and human transit services
- Design the transportation system to fit the existing urban and natural context, minimizing impacts to the Region's air, water, scenic view corridors, cultural resources, and wildlife habitat
- Support the transportation system to function as a complete system with effective connectivity both within the Region and to the rest of the state
- Embrace new technology as it becomes available
- Leverage the existing transportation network to support emergency response efforts

We'll send out a follow-up survey to collect input for updating your Vision & Goals.



FOCUS AREAS



Focus areas tell a story about what you want people to know about your TPR that's most important.

Your 2045 Focus Areas are:

- Tourism and Federal Lands
- Sustainability
- Regional Transit
- Freight and Rail
- Road Conditions
- Environmental Mitigation

Discussion Questions:

1. Are these still your TPR's focus areas?
2. Are there other focus areas that should be considered?
3. How would you prioritize the focus areas?



PUBLIC INVOLVEMENT



Upcoming Engagement

Strategic Highway Safety Plan (SHSP)

- Regions 3 and 5 SHSP Listening Sessions

Glenwood (Region 3)

Thursday, September 5th

1:30 - 3:00 p.m.

Glenwood Springs Community
Center

100 Wulfsohn Rd,
Glenwood Springs, CO 81601

Durango (Region 5)

Wednesday, September 4th

1:30 - 3:00 p.m.

Durango Recreational Center
Peaks Conference Room

2700 Main Avenue,
Durango, CO 81310

- For more information, contact shsp@state.co.us

Active Transportation Plan (ATP)

- Active Transportation survey open through September 13, 2024
- For more information or to sign up for updates, visit

bit.ly/CDOTActiveTransportationPlan



ATP Survey



Optional Transit / Active Transportation Session (Fall)

- **Goal:** Focused discussion on transit & active transportation priorities and needs.
- **Attendees:** TPR members and special interest stakeholders (transit providers, bicycle advocacy groups, etc.)
- **Length:** 1.5-2 hours (may vary by TPR)
- **Scheduling and Facilitation Options:**
 - Extend TPR meeting on November 14
 - Schedule virtual meeting in October/November
 - Who needs to be included in this discussion?
 - Other thoughts?

Topics:

- Discuss **pressing issues/needs** in your area for transit and active transportation, with a focus on their connection to neighborhood centers and housing.
- **Transit:** Discuss integration of the services that CDOT provides with local/regional needs that may be served by other transit agencies, including both transit operations and capital needs, to maximize investments.
- **Active Transportation:** Discuss priorities for active transportation to connect with transit, neighborhood centers and housing.



NEXT STEPS



Questions and Discussion

Questions and Discussion from the Group?



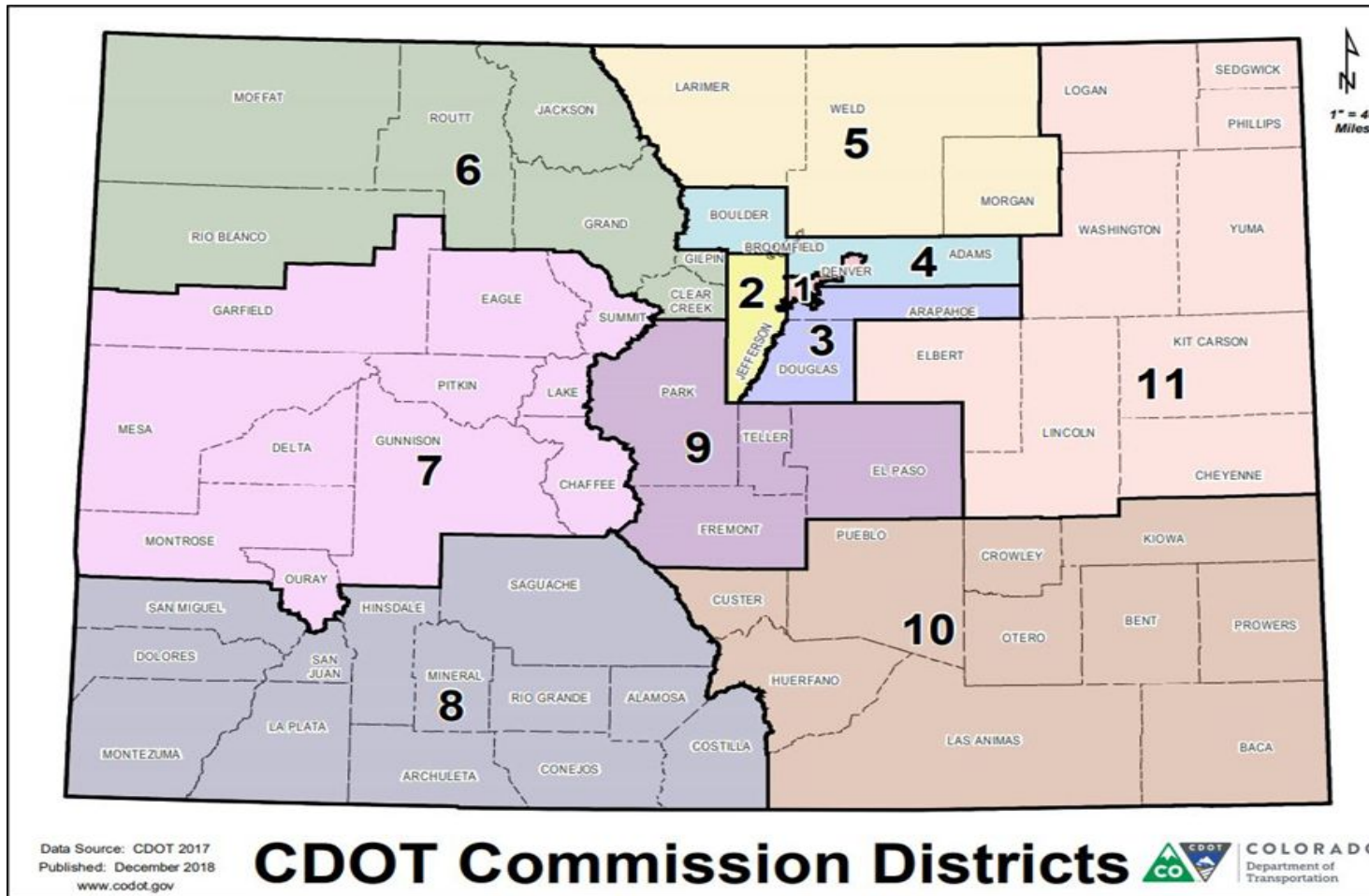
COLORADO

Department of Transportation

Region 3 Discussion for Regional Priority Programming (RPP)



Transportation Commission (TC)



The Transportation Commission sets:

- General Management policy for CDOT
- Recommendations on Transportation Policy
- Adopting budget and construction priorities



Capital Construction Falls into Three Main Categories of Funding

Asset Management

- Surface Treatment
- Bridge On
- Culvert
- Wall
- Tunnels
- Signals

Safety

- FASTER Safety
- Hazard Elimination
- Hot Spots
- Wildlife

Capital Construction

- Regional Priority Program
- Strategic Funding (Bonding or Legislative Authorization)

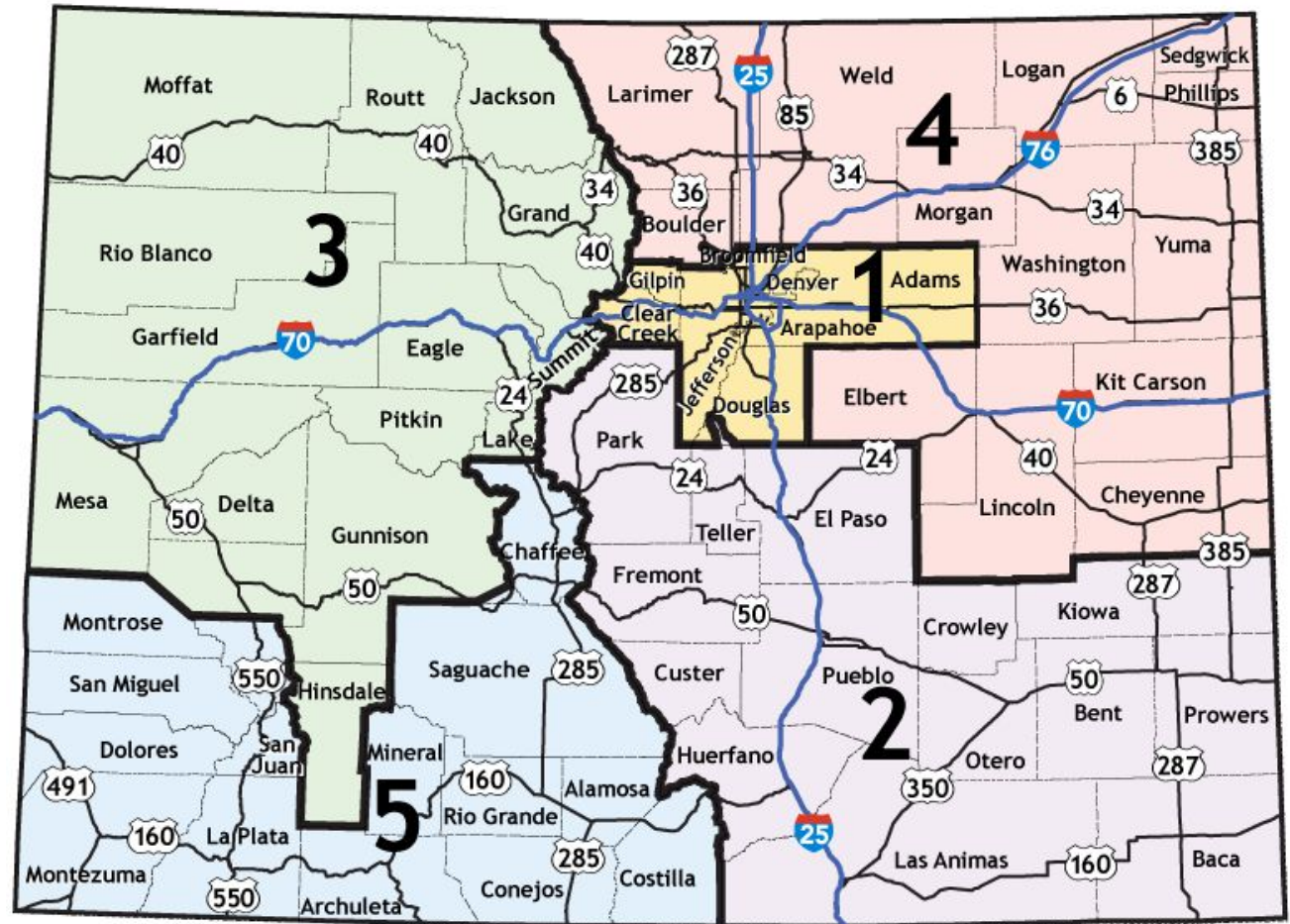
All of these funds come to the Region by various formulas and with various spending criteria



Statewide RPP Distribution

Currently the Transportation Commission allocates \$50 Million per year and Regional Percent is shown below.

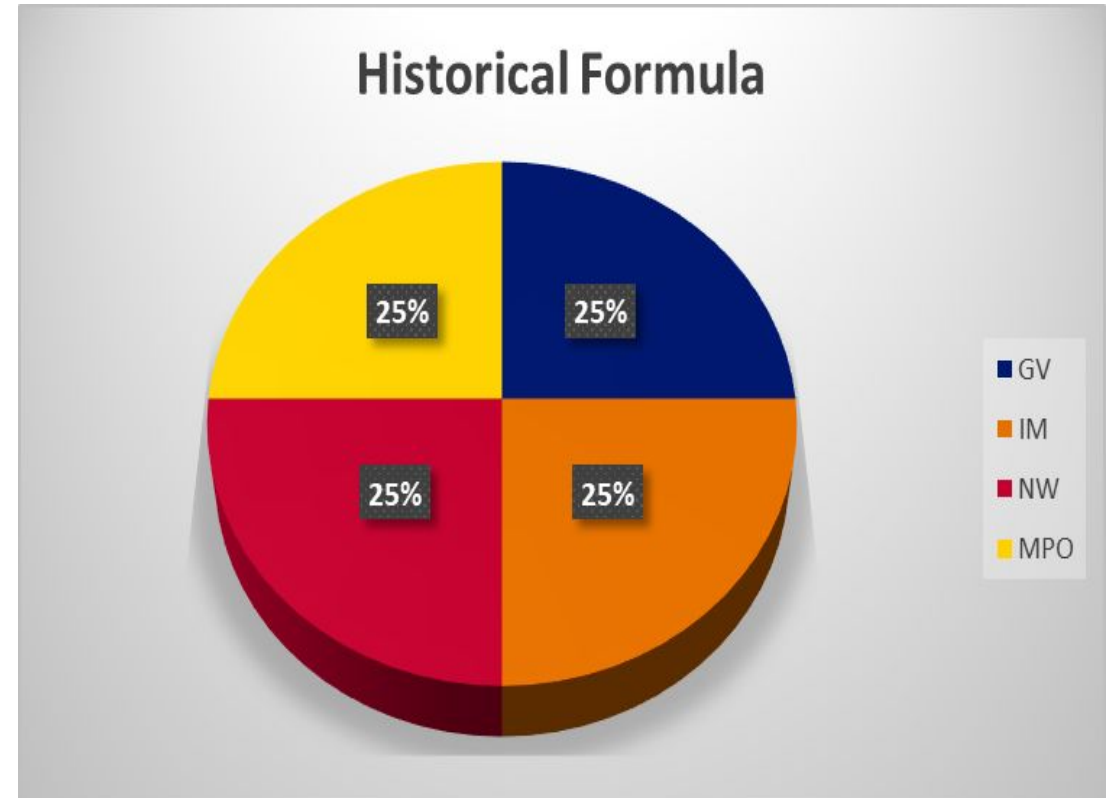
- 1. 33.5%
- 2. 19.9%
- 3. 14.3% = about \$ 7M/year
- 4. 23.2%
- 5. 7.1% =about \$ 3.5M/year





History of Region 3 distribution of RPP and Strategic Funding

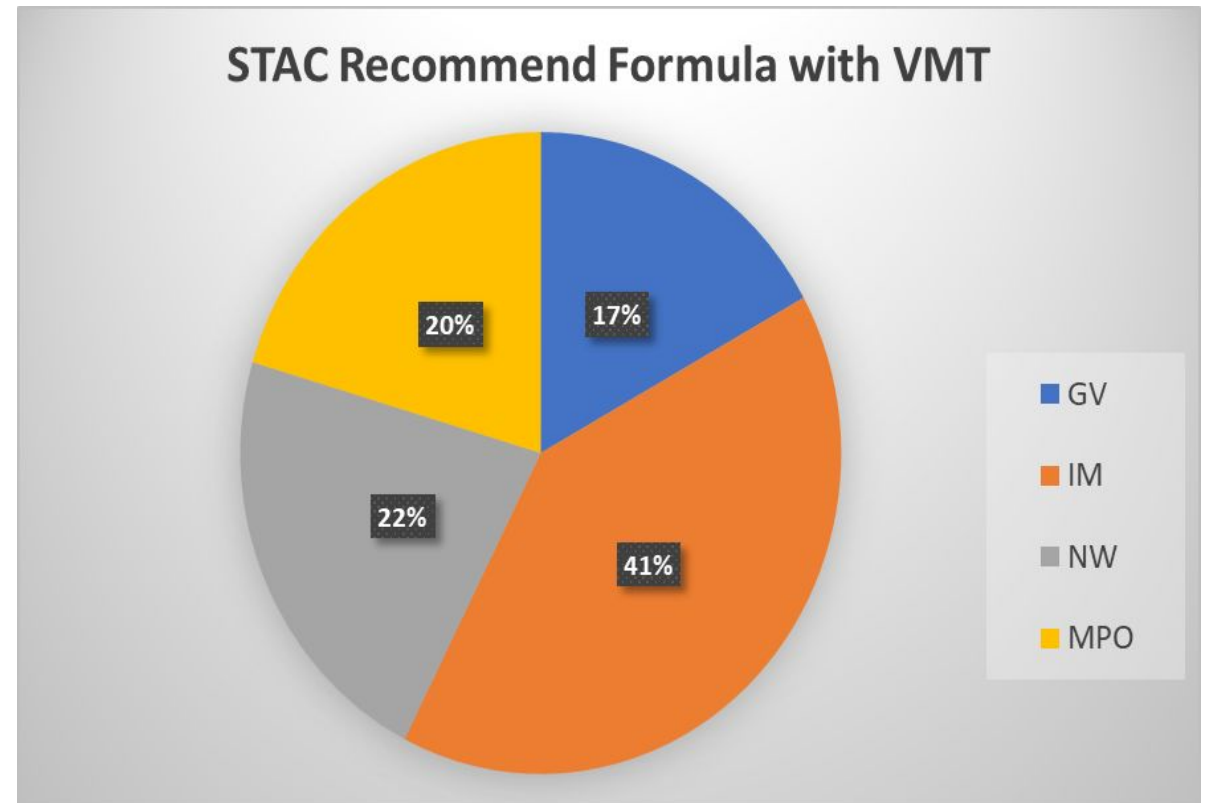
- Equal Share per TPR/MPO
 - Reviewed and shown equitable in 2007
 - State RPP formula was based on Lane Miles, Vehicle Miles Traveled (VMT), and Annual Average Daily Traffic (AADT)
 - Summit County was added to Region 3 in 2013
 - Population was added into HQ formula in 2015 but not taken into account for Regional distribution
- For the initial phases of the 10-year pipeline (in 2019) about 20% of Strategic Funding was dedicated to I-70 in Region 3





Region 3 TPR/MPO Chairs Recommendation STAC Formula With VMT Scenario

- Metric Percentages are:
 - 25% VMT
 - 20% Population
 - 40% Lane Miles
 - 15% Truck VMT
- Gunnison Valley TPR - 17%
- MPO - 20%
- Northwest TPR - 22%
- Intermountain TPR - 41%
- Individual TPR/MPO distributions may be rounded.





Thank you!

For Questions or Comments, please contact:

Mark Rogers
Planning Manager
mark.rogers@state.co.us
(970) 683-6252

Jessi Spencer
LA/Planning Support
jessi.spencer@state.co.us
(501) 412-3860

Design Projects	Highway	Mile Points	Current Status	Ad Date	Construction Start	Construction Completion	Scope	Comments
Rogers Mesa Phase I	SH 92	15.3-16.71	Post FOR/Redesign	9/19/2024	Winter 2024	Fall 2025	Shoulders, Drainage Improvements, Access Control	Project is in a redesign due to budget constraints
Rogers Mesa Phase II	SH 92	16.71-18	In Design				Shoulders, Drainage Improvements, Access Control	
US 50 Delta Resurfacing	US 50	68.5-77	DOR	Fall 2025	Spring 2026	Fall 2026	Resurfacing	Will include the limits through the City of Delta
SH 348 Resurfacing	SH 348	0.3-16.8	Scoping	11/13/2025	Spring 2026	Fall of 2026	Mill and Fill (where there is curb), Leveling and overlay, ADA Ramps, culvert replacement	
SH 65 Resurfacing	SH 65	0-6.5	Out to AD	11/14/2024	Spring 2025	Fall of 2025	1" Leveling, 1.5 Overlay, Mill and Fill in specific areas	
US 50 Various Culverts	US 50	Various Locatoins	Scoping					
Cedar Creek Culvert Replacement	US 50	89.93	FIR	5/15/2025	Fall 2025	Spring 2026	Replacement of the Cedar Creek Culvert that goes under US 50	



GVTPR- CURRENT PROJECT

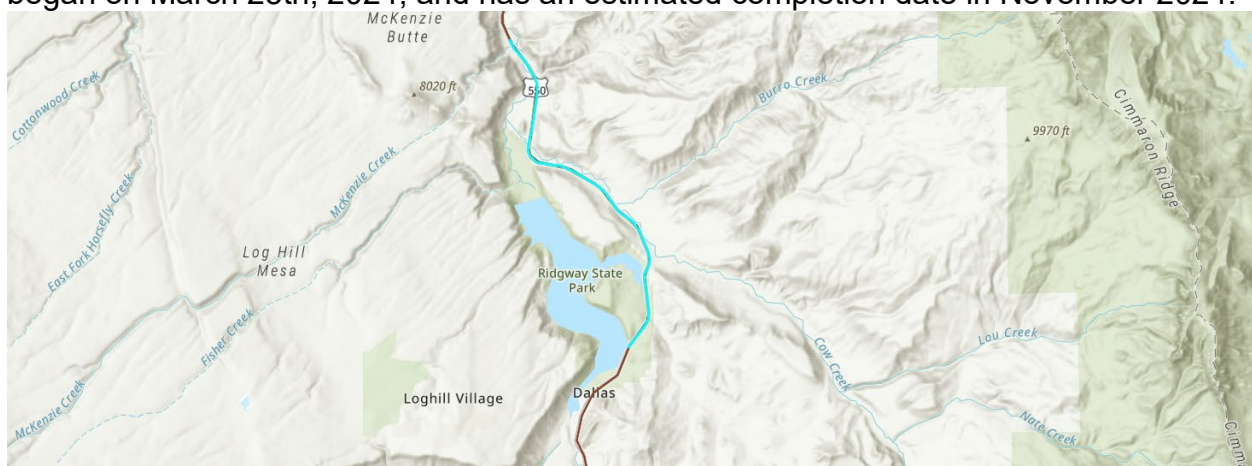
US 550 Pacochupuk South Mobility & Billy Crk Safety Improvements- 23601

Budget: \$14 million

Funding Type: SUR/SB-267

Awarded: FNF Construction, Inc.

This project is located on US 550 in Ouray County, between approximately MP 103.8 and 117, just north of the Ridgway State Park entrance. The scope of work includes limited shoulder widening, repairing existing deer fencing and connecting new deer fencing to the existing at MP 212.5. A large animal underpass will be constructed at Billy Creek, between MP 114 and 115. HMA patching will take place between Pacochupuk campground and the CR 8 intersection and passing lanes will be added. This project began on March 25th, 2024, and has an estimated completion date in November 2024.



R5 FY22 Chain Stations- 24425

Budget: \$5.2 mill

Funding Type: Freight

Awarded: Hank Williams, Inc.

This chain station project is located on SH 145 in San Miguel County, as well as US 160 Wolf Creek Pass and La Veta Pass, and SH 17 Cumbres Pass. Four new chain stations will be constructed. In addition to chain stations, 4 VMS signs will be replaced in both Region 3 and Region 5. This project originally went to Ad in February 2023. The bids came in too high and were rejected. The project was re-advertised, awarded and construction began on April 15, 2024, beginning at the SH 145 locations. The anticipated completion date is Fall 2024.

- SH 145, MP 71.5 (west of roundabout)

- SH 145, MP 68.9 (paving and no parking signs)
- US 160, La Veta Pass MP 276.7
- SH 17, Cumbres Pass MP 0.1
- US 160, Wolf Creek Upper East MP 173.7 (Paving Only)

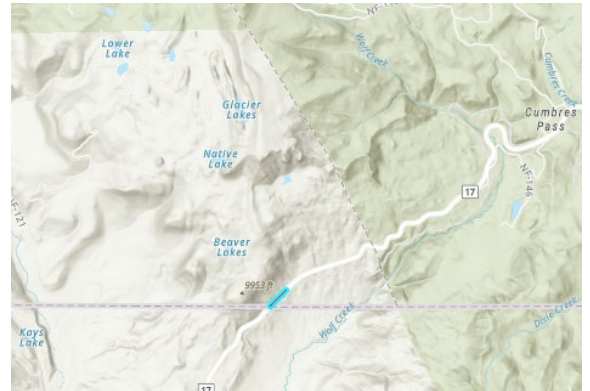
SH 145, MP 68.9 and MP 71.5



US 160- La Veta



SH 17- Cumbre



US 160- Wolf Creek



SH 145 MP 63.4 Wall Replacement- 24148

Budget: \$3.7 mill

Funding Type: Walls

Awarded: Hank Williams, Inc.

This project will take place on SH 145 near Ophir, at approximately MP 63.4. At this location, there are three wooden walls that will be replaced with two new walls. This project began on May 15th, 2024 and has a tentative completion date in October 2024.





GVTPR- FY 24 Maintenance Projects (Completed)

US 550 MP 84-89

County: Ouray

Treatment: Chipseal

Status: Completed June 2024



GVTPR- FY 25 Maintenance Projects (Planned)

SH 90 MP 6.8-7.3

County: Montrose

Treatment: Repave

Estimated Cost: \$75,000, Schedule: TBD

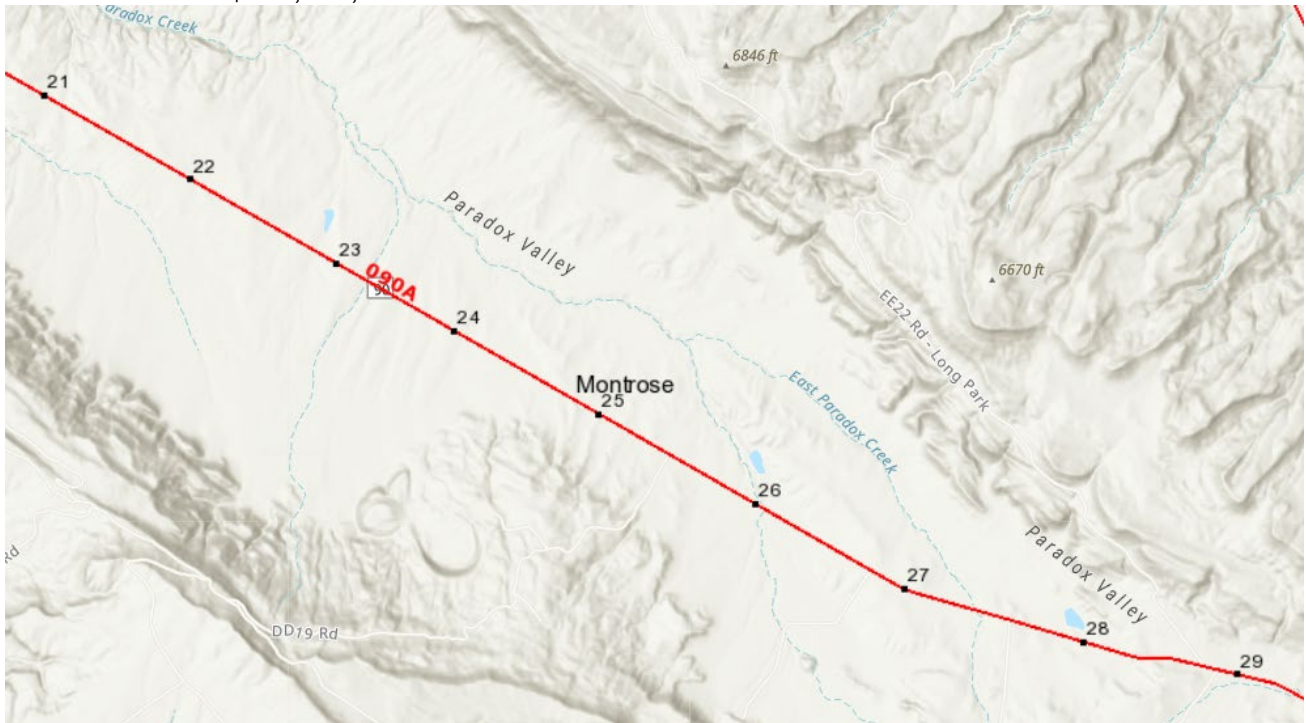


SH 90 MP 24.5-26

County: Montrose

Treatment: Repave

Estimated Cost: \$246,200, Schedule: TBD

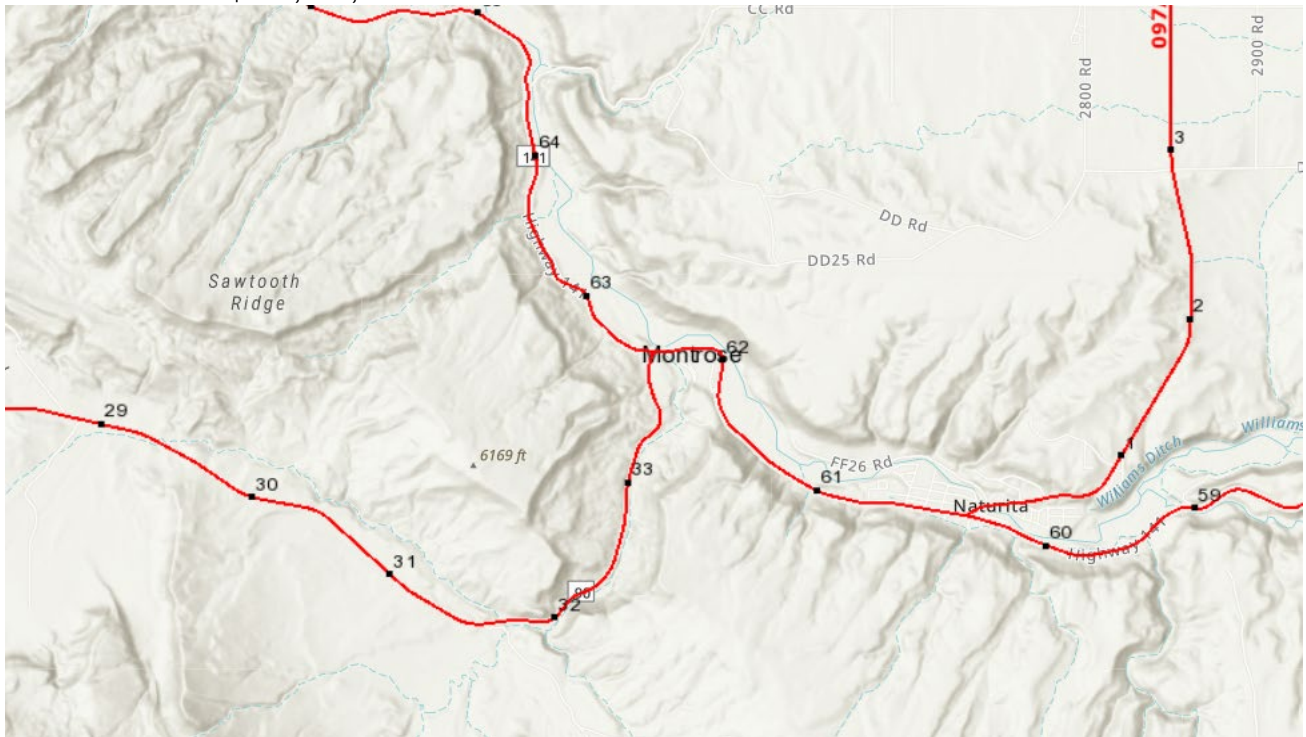


SH 90 MP 31.5-32.4

County: Montrose

Treatment: Repave

Estimated Cost: \$246,200, Schedule: TBD

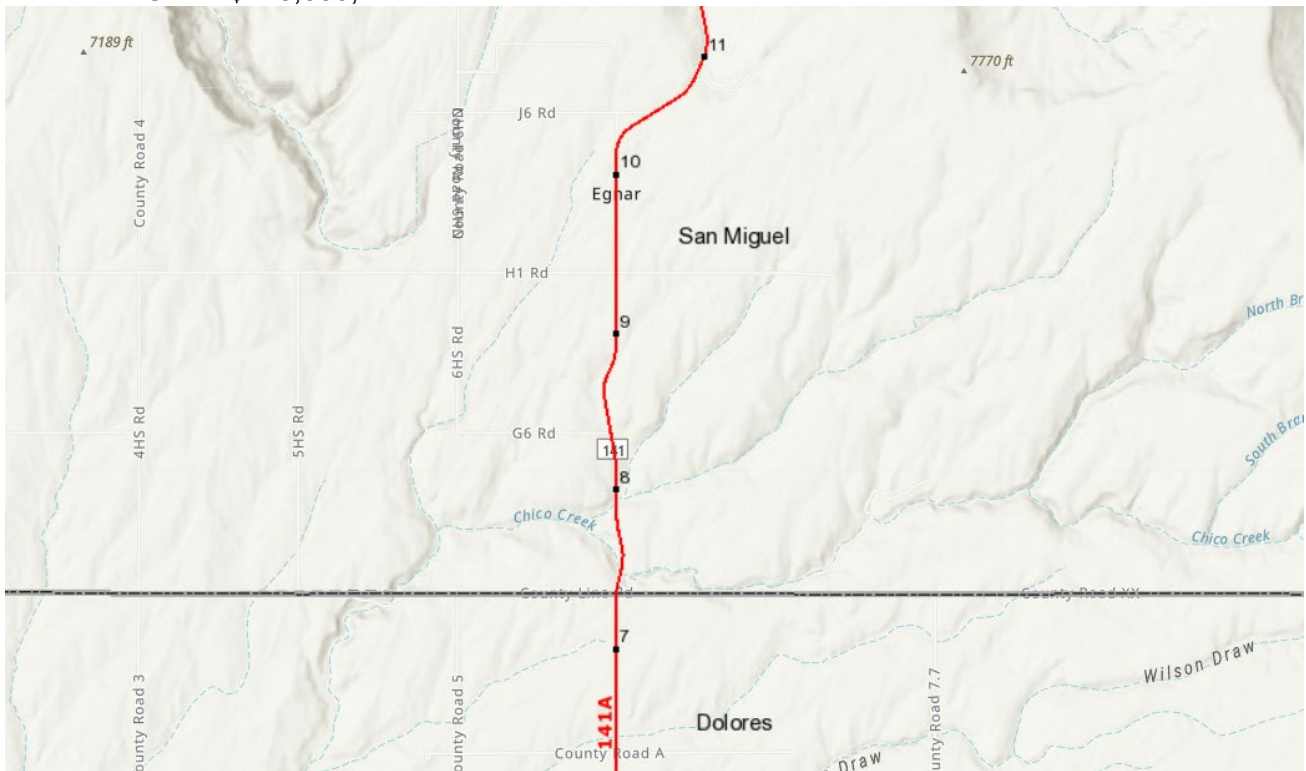


SH 141 MP 7-8.5

County: San Miguel

Treatment: Repave

Estimated Cost: \$245,000, Schedule: TBD

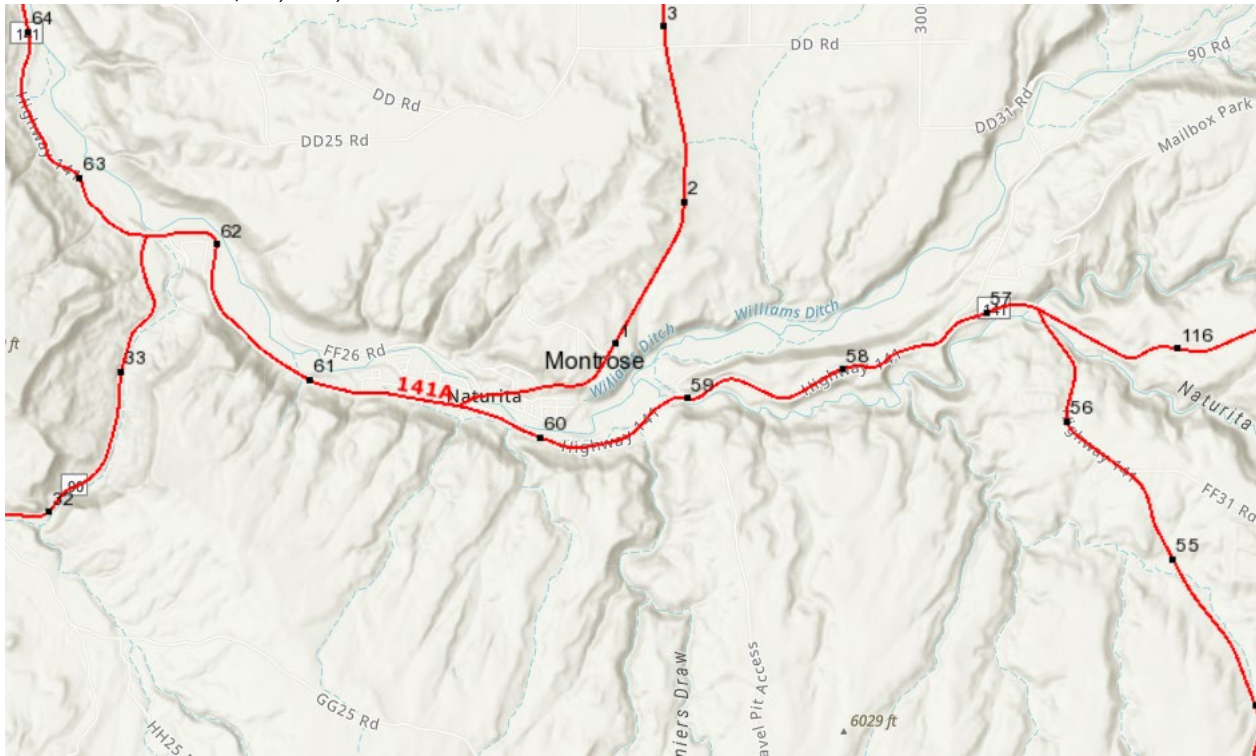


SH 141 MP 60-60.5

County: Montrose

Treatment: Repave

Estimated Cost: \$20,000, Schedule: TBD



SH 145 MP 110-117

County: Montrose

Treatment: Chipseal

Estimated Cost: \$240,800, Schedule: TBD

